

Fine and rough textured products

Polyester-based fine and rough textured **TIGER Drylac® Series 39/139** and **Series 49/149** surface finishes with gloss levels ranging from matte to high gloss are ideal for automobile underbody and marine environments where high chip resistance may be required. To ensure adequate corrosion protection in the valleys of the textures, it is essential to follow the minimum film thickness recommendations (refer to Product Data Sheets).

Wrinkle finishes

Polyester-based **TIGER Drylac®** wrinkle surface finishes provide an attractive solution to electronic cabinets, metal cabinets, light fixtures, automotive accessories, and other applications where the concealment of metal imperfections is required.

Industrial warehouse racking systems

Polyester-based TIGER Drylac® surface finishes in **Series 49/149** are formulated in sector-specific colors to provide an economical solution for industrial warehouse racking systems. They exhibit limited UV stability.

Polyester Urethanes

Polyurethane-based **TIGER Drylac® Series 44** surface finishes are available in a variety of colors, gloss levels and finishes such as matte, semigloss, glossy, clear, textured and metallic. They can be formulated-to-order in any color.

Clear Topcoats

Polyester, polyester super durable, polyurethane and acrylic-based **TIGER Drylac®** Clear products are available in a variety of gloss levels from matte to high gloss. Fine Texture matte and Rough Texture glossy Clear finishes in **TIGER Drylac® Series 49/149** are well suited to hide substrate imperfections. They can be used as a single coat directly over the substrate or as a topcoat over any other base color. Due to the textured finish, the base color will experience some appearance changes in color and gloss. It is strongly recommended to run trials prior to specifying or running the powder coating job.

Powder matting agents

Polyurethane-based powder matting agent is used when it is not practical to order a custom matte gloss finish. **Gloss Killer (44/00006)** is a smooth flat matte additive that dry blends into an existing powder to achieve continuous matting from 30-60 gloss (gloss level according to ASTM 523 at 60° angle). Gloss Killer is suitable for all **TIGER Drylac®** interior application products and for exterior applications in conjunction with **TIGER Drylac® Series 39/139, Series 49/149** or **Series 59**. Gloss Killer is not suitable for façade/architectural applications.

Epo-Strong

Epoxy-based two-component conductive putty is suitable for minor scratch and defect repairs on substrate surfaces. **Epo Strong Putty (93/70080)** can be top coated with **TIGER Drylac®** powder coatings and is suitable for interior and exterior applications. Epo Strong is not suitable for façade/architectural applications or corrosion protection.

Surface finishes exhibited in this color card include:

interior applications	Epoxy/polyester (hybrid)	Series 09
	Epoxy	Series 69
	Polyester/acrylic (hybrid)	Series 16
	Polyester urethane	Series 44
interior and exterior (non-architectural) applications		Series 39
	Polyester TGIC	Series 49
		Series 418
		Series 59
	Polyester TGIC-free	Series 139
exterior (architectural) applications		Series 149
	Polyester TGIC super durable	Series 38
	Polyester TGIC-free super durable	Series 138
exterior (automotive) applications	Polyester TGIC	Series 223

The living global TIGER network at your service.



Production facilities

Austria | Canada | China | Mexico | U.S.A. | Vietnam

Affiliated companies and distribution

Europe

Austria | Belarus | Benelux | Bosnia & Herzegovina | Bulgaria | Croatia | Czech Republic | Estonia | France | Germany | Great Britain | Greece | Hungary | Italy | Latvia | Lithuania | Macedonia | Poland | Romania | Serbia & Montenegro | Slovakia | Slovenia | Spain | Switzerland | Turkey | Ukraine

The Americas

Canada | Mexico | U.S.A.

Asia

China | India | Japan | Taiwan | Vietnam



Essentials

Exterior and interior powder coating applications | Volume 6



Powder coatings for exterior and interior applications

This color card features a wide selection of stock products intended for applications such as residential window and door frames, lawn mowers, garden equipment, patio furniture, fences, electrical boxes, light fixtures, automotive accessories, bicycles, motorcycles, agricultural equipment and machinery, sporting goods and more. Colors not displayed in this color card might appear in another **TIGER Drylac®** color card or can be Custom Ordered.

Colors shown in this color card are suitable for exterior and interior applications. An exception to this is **TIGER Drylac® Series 69**, which are intended for interior applications only.



Underwriters Laboratories Inc. (UL) Recognition

TIGER Drylac® standard and custom colors in **Series 39/139** and **Series 49/149** are made in the USA, Canada or Mexico. They are periodically re-certified and carry the (Underwriters Laboratories) Recognized Component Mark (Spec DTOV2.MH27573).

Bengal colors

Polyester-based **TIGER Drylac® Series 49/149** colors offers exceptional flow properties in high gloss level.

SealKor One Coat Technology

Polyester-based **TIGER Drylac® SealKor** products in **Series 418** and **Series 59** are weather-resistant powder coatings compliant with AAMA 2603. These products provide high corrosion protection and moisture barrier properties. SealKor products are recommended as a one-coat alternative to conventional two-coat systems (primer + topcoat). SealKor can also be used as an alternative to epoxy-based zinc-rich and zinc-free primers. **TIGER Drylac® SealKor** products can be Custom Ordered in any color.

Note: **TIGER Drylac® SealKor** powder coatings in **Series 223** are formulated for automotive OEM applications.

ASA/ANSI colors

Polyester-based ASA colors (also referred to as ANSI colors) are available in various shades of industrial gray in **TIGER Drylac® Series 39/139** and **Series 49/149**. They are suitable for industrial machinery and other applications where neutral gray colors are required.

Anti-graffiti products

TIGER Drylac® polyurethane-based anti-graffiti products provide excellent chemical resistance and surface hardness properties. Anti-graffiti Clear powder coatings can be applied as a topcoat over any **TIGER Drylac®** powder coating to obtain a tough, easy-to-clean surface.

Anti-skid products

Polyester-based **TIGER Drylac®** products with anti-slip properties are ideal for metal staircases, metal decking, safety gratings, floor plates and grids, maintenance catwalks, elevator floors, conveyors and surfaces that require an anti-slip coating for safety purposes. Use of a primer or a semigloss basecoat is recommended in these applications.

High-reflectivity products

Polyester-based **TIGER Drylac®** products formulated with high reflectivity for lighting applications strike a perfect balance between smoothness and hiding power.

Outgassing forgiving (OGF) products

TIGER Drylac® surface finishes with OGF properties are developed for castings, hot galvanized and forged steel, aluminum flame-sprayed and other porous and outgassing-prone substrates such as fired clay and ceramics. They are available in a variety of colors shown in this color chart and can also be formulated in custom-colors. **TIGER** also offers OGF additives that can be dry blended to any **TIGER Drylac®** powder coating. However, for large volumes, it is recommended to produce the powder coating in an OGF formulation on a custom-basis.

Antique/vein metallic products

Polyester-based antique/vein metallic **TIGER Drylac® Series 59** surface finishes are formulated with both aluminum and mica pigments. They do not require a clear topcoat for exterior or interior applications. However, the use of a topcoat may improve durability.

   www.tiger-coatings.com



999000160097 / 01-23

Vol. 6

															
high gloss 149/1111 Bengal White gloss level 90-100	glossy 139/10210 Apollo White gloss level 85-100	high gloss 49/10410 High-Reflective White gloss level 90+	glossy 149/10420 WW White gloss level 85-95	high gloss 49/80036 Wet Black gloss level 95-110	high gloss 223/80005 SealKor Black gloss level 95-110	high gloss 49/88888 Bengal Black gloss level 90-100	glossy 139/80010 Gloss Black gloss level 80-90	rough texture matte 49/81307 Aprx to RAL 9005	glossy 139/60010 Chocolate Brown gloss level 75-85	semi gloss 149/62070 Rail Bronze gloss level 38-54	matte 39/60060 Roman Bronze Matte gloss level 20-30	glossy 139/40010 Royal Blue gloss level 80-90	high gloss 149/44444 Bengal Blue gloss level 90-100	glossy 139/30070 Snowmobile Purple gloss level 85-95	glossy 418/41218 Playground Purple gloss level 85-97 NEW
															
glossy 139/10160 Horizon White gloss level 85-95	glossy 149/13720 Alaska Blanco gloss level 80-95	glossy 418/11244 SealKor White gloss level 80-95	glossy 139/10200 Appliance White gloss level 85-95	glossy 149/80600 Alaska Black Glossy gloss level 80-95	outgassing forgiving 49/80720 Black OGF gloss level 65-75	semi gloss 223/80001 SealKor Black gloss level 55-65	semi gloss 149/81231 Alaska Medium Black gloss level 55-65	fine texture matte 49/62721 Brown Fine Texture	bengal 149/10388 Bengal Cream gloss level 90-100	glossy 149/19365 Tan gloss level 80-95	glossy 139/15010 Beige gloss level 85-95	metallic 49/99999 *** Bengal Silver	metallic 139/90000 Silver	metallic 149/93010 Starburst Silver NEW	metallic 138/91021 Anodized Silver NEW
															
glossy 149/10316 Steel Rack White gloss level 85-95	glossy 139/10010 Sky White gloss level 85-95	glossy 44/10008 Anti-Graffiti White gloss level 85-95	reduced gloss 149/10870 White OGF gloss level 66-79	semi gloss 139/80040 Black Semigloss gloss level 55-65	glossy 418/80020 FC Black Mar Resistant gloss level 52-62	semi gloss 49/80033 PacCar Black Semigloss gloss level 50-60	semi matte 49/81430 Black Semi Matte gloss level 35-45	glossy 139/15020 Almond gloss level 80-95	flat matte 16/15013 Desert Tan gloss level 2-6 NEW	glossy 39/30010 Ruby Red gloss level 80-90	glossy 139/30100 Fire Engine Red gloss level 80-90	metallic 49/91312 * *** Chrome OGF	metallic 39/60020 Bronze Matte	antique/vein metallic 59/90050 Antique Bronze Metallic	antique/vein metallic 59/90820 Antique Silver Metallic
															
semi gloss 149/13370 Off White gloss level 55-65	semi matte 39/10040 White Semi Matte gloss level 35-45	matte 49/11350 White Matte gloss level 15-25	matte 49/10103 White Matte RAL 9010 gloss level 15-25	matte 44/90052 Millennium Black Matte gloss level 22-30	matte 49/81210 Alaska Black Matte gloss level 20-30	matte 49/80350 Black Matte RAL 9005 gloss level 13-27	matte 39/80020 Black Matte gloss level 10-25	glossy 149/33333 Bengal Red gloss level 85-95	glossy 149/30052 ▲ Steel Rack Red gloss level 85-95	glossy 149/25001 ▲ Steel Rack Orange gloss level 85-95	glossy 139/32920 Pumpkin Orange gloss level 85-95	antique/vein metallic 59/90821 Antique Copper Metallic	clear 38/00001 ❖ Clear High Gloss SD	clear 49/01234 ❖ Bengal Clear Glossy	clear 44/00018 ❖ Clear Anti-Graffiti Glossy
															
fine texture matte 49/13150 White Fine Texture	rough texture glossy 49/11570 RTG Nature White	glossy 49/70158 Bengal Dark Grey gloss level 80-90	high gloss 49/77777 Bengal Light Grey gloss level 90-100	flat matte 44/90053 Millennium Black Flat Matte gloss level 7-12	flat matte 44/80060 Solar Black Flat Matte gloss level 3-8	flat matte 44/80066 Black Magic Flat Matte gloss level 3-9	flat matte interior 69/80291 Black gloss level 2-5	glossy 139/20010 Safety Orange gloss level 80-90	high gloss 149/22222 Bengal Orange gloss level 85-95	glossy 59/21157 New Cat Yellow gloss level 75-85	high gloss 39/20130 Buttercup Yellow gloss level 90-100	clear 44/00049 ❖ Geronimo Satin	clear 49/00280 ❖ Clear Semi Matte	clear 38/00088 ❖ Clear Matte SD	clear 16/00030 ❖ Clear Flat Matte
															
glossy 139/70200 ASA-49 gloss level 75-85	ASA 139/70020 ASA-61 gloss level 75-85	glossy 139/70010 ASA-70 gloss level 80-90	semi gloss 149/70082 ASA-61 Semigloss gloss level 55-65	fine texture matte 49/81241 Black Extra Fine Texture	fine texture matte 39/80200 Black Fine Texture	fine texture matte 49/80830 Black Matte Fine Texture	fine texture matte 49/80521 Anti Skid Black	high gloss 49/66666 Bengal Yellow gloss level 90-100	glossy 149/20047 ▲ Steel Rack Yellow gloss level 85-100	glossy 59/21157 SD Deer Yellow gloss level 80-95	glossy 139/20020 Safety Yellow gloss level 88-98	clear fine texture 49/00260 ❖ Clear Sandy FT	clear rough texture 49/03002 ❖ Clear Textured RT	primer 69/90500 (USA & Mexico) 69/90701 (Canada) Zinc-Rich Primer gloss level 60-90	primer 69/70000 Dryprotector gloss level 1-5
															
semi matte 49/70239 Fed Std Haze Grey OGF gloss level 35-45	outgassing forgiving 49/71800 Haze Grey OGF gloss level 66-79	fine texture 49/75427 Gray Fine Texture NEW	fine texture 549/70022 Ansi 61	fine texture flat matte 59/81073 SD Black Super Tex NEW	fine texture matte 39/80170 Black Winkle	rough texture glossy 39/81420 Aprx to RAL 9005	rough texture glossy 49/80990 Aprx to RAL 9011 Graphite	high gloss 149/55555 Bengal Green gloss level 90-100	outgassing forgiving 149/51610 Moss Green OGF gloss level 75-85	glossy 39/50060 U.S. Green gloss level 85-95	flat matte 16/50012 Olive Drab gloss level 2-6 NEW	primer 09/73841 OGF gloss level 65-75	primer 69/11001 Dryprotector White gloss level 2-6	Disclaimer Color swatches featured in this color card have been matched to color standards at a 45° visual angle under a D65 Daylight primary source. Gloss level on metallic, fine and rough textured swatches cannot be accurately measured. The swatches are to be considered as an indication only. In practice, discrepancy between the color swatch and the actual powder coating may arise. This is due to paper and ink limitations, the influence of light and heat during the color card production, as well as gloss level, substrate, surface variations, binder systems and pigments, coating thickness and cure oven conditions used during application. For an accurate color and finish assessment, it is recommended to obtain a powder coated sample panel from TIGER Drylac®.	Disclaimer Color swatches featured in this color card have been matched to color standards at a 45° visual angle under a D65 Daylight primary source. Gloss level on metallic, fine and rough textured swatches cannot be accurately measured. The swatches are to be considered as an indication only. In practice, discrepancy between the color swatch and the actual powder coating may arise. This is due to paper and ink limitations, the influence of light and heat during the color card production, as well as gloss level, substrate, surface variations, binder systems and pigments, coating thickness and cure oven conditions used during application. For an accurate color and finish assessment, it is recommended to obtain a powder coated sample panel from TIGER Drylac®.

* To increase durability and chemical resistance, TIGER Drylac® recommends the application of a clear top coat for interior and exterior applications. *** Due to semi transparency of the product, the opacity of the color and finish will depend upon the substrate type and the film thickness. A film below 2.8 mils will exhibit limited hiding. Please contact TIGER Drylac® if using the following products in a 2-coat system consisting of a primer or e-coat base coat. ❖ Clear coat swatch for indication only. It does not represent the actual clear powder coating. For an accurate assessment and to qualify the finish and shade, it is recommended to obtain a powder coated sample before specifying the product. ▲ Exhibits limited UV stability.

ONLINE VERSION: The colors/effects shown here will deviate from the original color/effect due to screen technology.

ONLINE VERSION: The colors/effects shown here will deviate from the original color/effect due to screen technology.

IFS Powder Coatings

Architectural Color Collection



IFS Coatings for Architectural Applications

IFS has a world class range of powder coatings designed to protect and decorate architectural metal to the very highest standards. Our architectural powder coatings are tough, weatherable, and meet and exceed each of the AAMA performance specifications, ensuring every level of exterior durability is available.

The Architectural Color Palette

The IFS Architectural Color Collection showcases just some of the colors available in the IFS range, from classic solid shades, to fine metallics and even anodic styles. We also understand that unique projects need unique colors. With that in mind, the free **IFS Color Matching Service** allows you to get the exact shade you are looking for in an environmentally responsible, durable coating. We will analyze the shade using the latest color matching technology and create a color for you to approve. What's more, you can also change the gloss, or add metallic/mica or textures to the product. Talk to your IFS architectural representative for more information on our exceptional color matching capabilities.

The IFS Architectural Color Matching Service

- Free custom color creation available
- Available in standard polyester, super durable and fluoropolymer technology
- Change the gloss, add metallics or textures
- Industry leading color matching times
- Sample panels available free of charge
- Small batches available, perfect for prototypes or one off pieces



With any coating, powder or liquid, there are some limitations on what is achievable at the higher levels of exterior durability. Quite simply, the pigments for some shades (for example, bright red) that will offer the durability required for these specifications, are not available. However there is a vast range of colors that are available, and will meet the exterior durability demands of the high level specifications. Similarly, not all gloss levels or metallic effects can be achieved at an AAMA 2605 level. Talk to your IFS architectural advisor for advice.

AAMA Specification	AAMA 2603	AAMA 2604	AAMA 2605
IFS Product	IFS 300SP	IFS 400SD	IFS 500FP
Product chemistry	Standard Polyester	Super Durable Polyester	100% FEVE Fluoropolymer (70% PVDF liquid equivalent)
Warranty*	No warranty	10 year warranty	20 year warranty

*Warranty supplied when applied by an IFS Registered Applicator to aluminum.

The IFS architectural range has been used on a vast array of architectural applications, from residential windows and doors, commercial store front and retail interiors, to curtain wall, louvers, scrims and screens on skyscrapers and monumental buildings.

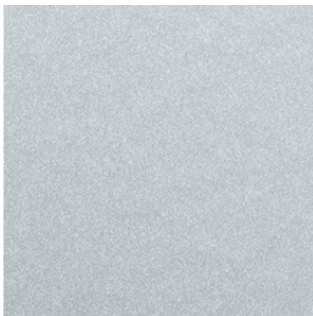
The IFS Architectural Color Collection

IFS architectural coatings offer a combination of great aesthetics, toughness, durability, cost effectiveness and are the environmentally responsible choice. All of the colors shown on this card are available in AAMA 2603, 2604 and 2605 level products, so no matter what the project demands, we've got you covered. IFS 400SD, our super durable architectural product provides great exterior protection and improved color and gloss retention over a standard polyester product, while IFS 500FP, our world class 100% FEVE offers the ultimate in long term durability, color and gloss retention and scratch resistance. For more information on the strict performance tests that IFS 400SD and IFS 500FP meet and exceed, please talk to your IFS representative.

IFS 500FP codes start with an "F" and meet and exceed the performance requirements of AAMA 2605
IFS 400SD codes start with an "S" and meet and exceed the performance requirements of AAMA 2604



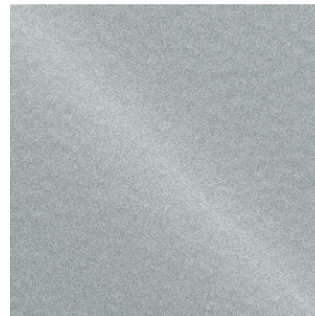
IFS ARCHITECTURAL ANODICS



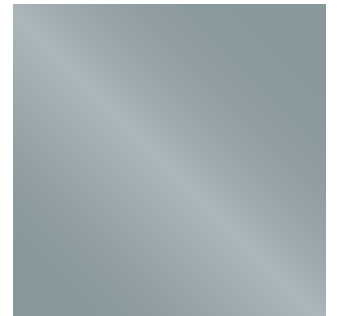
Anodized Silver
FRSL 94542
SRMS 95339



Silver Sparkle
FRSS 93652
SRSL 95572



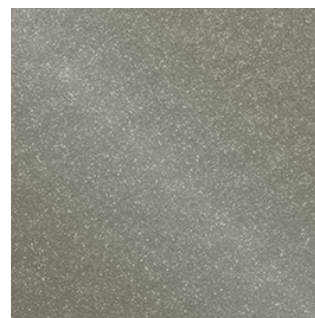
Matte Platinum
FRML 95458
SRSM 95573



Steel Blue
FRSL 95577
SRSL 95574

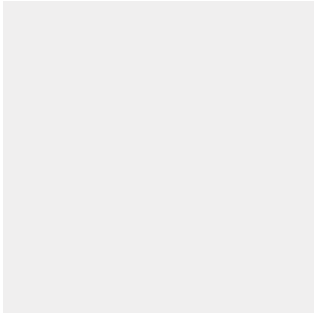


Dark Bronze
FRSL 95578
SRSL 95575

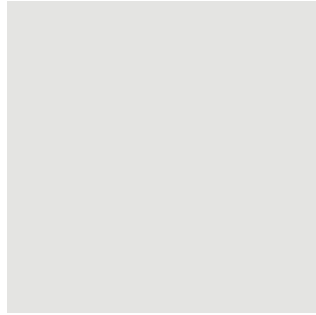


Medium Bronze
FRSL 95579
SRSL 95576

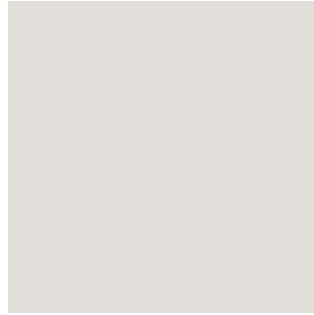
IFS ARCHITECTURAL SOLIDS



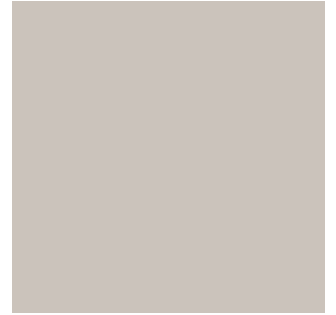
Apollo White
FRSL 82908
SRSL 82519



Bone White
FRSL 82909
SRSL 82520



Ivory
FRSL 46646
SRSL 45891



Sandstone
FRSL 46647
SRSL 45892



Seawolf
FRSL 46645
SRSL 46636



Fashion Gray
FRSL 74652
SRSL 74008



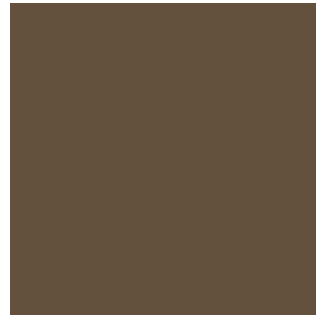
Colonial Gray
FRSL 74653
SRSL 74009



Military Light Blue
FRSL 21709
SRSL 21708



Burgundy
FRSL 62496
SRSL 62487



Antique Bronze
FRSL 46648
SRSL 45893



Black
FRSL 11390
SRSL 11386



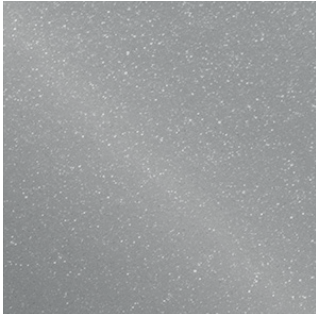
Charcoal
FRSL 74654
SRSL 74007



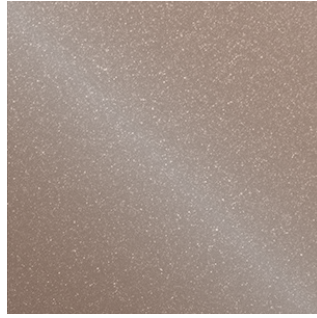
Hartford Green
FRSL 32872
SRSL 32545



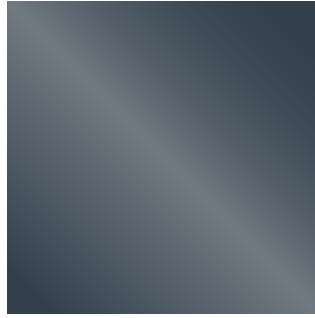
IFS ARCHITECTURAL METALLICS



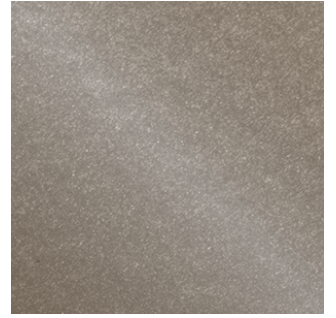
Classic Platinum
FRSL 96595
SRSS 95565



Champagne
FRSL 96596
SRSL 95566



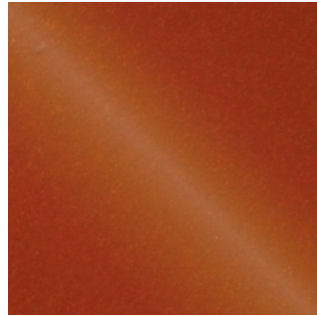
Pewter
FRSL 96597
SRSL 95567



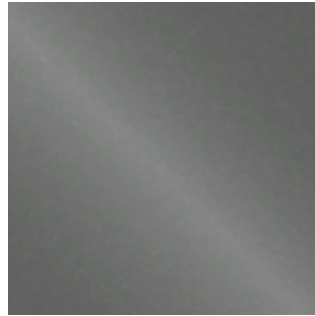
Light Bronze
FRSL 96599
SRSL 95569



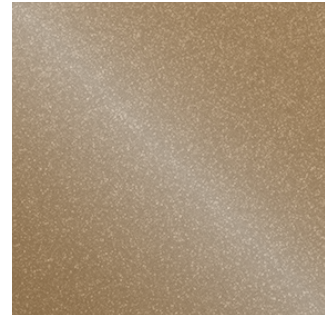
Cosmic Gray
FRSL 96598
SRSL 95568



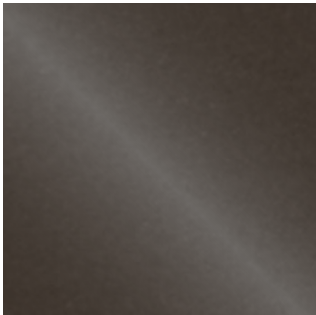
Copper Penny
FRML 90502
SRML 99043



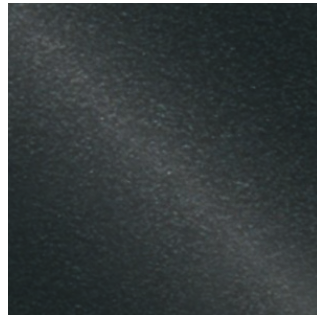
Stormy Silver
FRML 90488
SRML 90489



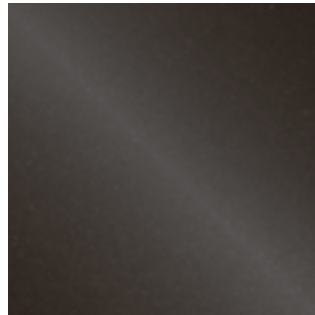
Gold Nugget
FRSL 95571
SRSS 90464



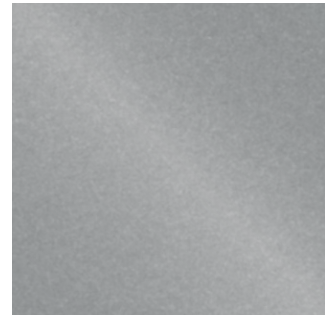
Industrial Bronze
FRML 90480
SRML 90482



Fine Texture Black Chrome
FRML 90501
SRML 90503



Warm Bronze
FRML 90494
SRML 90499



Sunlit Silver
FRML 90484
SRML 90487



Timeless Silver
FRML 90492
SRML 90493



IFS 500FP codes start with an "F" and meet and exceed the performance requirements of AAMA 2605
IFS 400SD codes start with an "S" and meet and exceed the performance requirements of AAMA 2604



3601 N. Interstate 35
Gainesville, TX 76240
P: 940 668 1062
www.ifscoatings.com

Any recommendations contained herein or any information given by any IFS Coatings representative is based on tests and information believed to be accurate. However, since we have no control over the conditions under which our products are transported, stored, handled or used by purchasers, all recommendations and sales are made on condition that IFS Coatings will not be held responsible for any damages resulting from their use. No representative of ours has any authority to waive or change this provision.

© IFS Coatings 2021

IFS Coatings RAL Collection

IFS is proud to offer our complete RAL collection in high quality powder coatings. IFS RAL Collection powders can be used on a vast array of products for both interior and exterior applications. In addition to great powder coatings, you will also benefit from:

- Quick turnaround
- Flexible batch sizes
- Great pricing
- First class service

IFS Standard Polyester Powders

189 RAL shades are stocked in standard polyester technology. Each of these professional RAL shades can be “altered” to include any of the following effects:

- Sparkle metallic
- Anti-skid
- River texture
- Mini texture
- Silver vein
- OGF
- Semi gloss

IFS RAL Super Durable Powders

All of the RAL shades can also be made in Super Durable technology, perfect for exterior applications. 31 of the most popular RAL shades are as available as Super Durables. On this card, Standard Polyester IFS codes begin with PLSF and Super Durable IFS codes begin with SLSF.

The IFS Super Durable range will meet the AAMA 2604 performance criteria when applied over properly pre-treated aluminum and offers excellent exterior durability and 3000 hrs. salt spray. IFS Super Durable powders also provide very good hardness and chemical resistance.

IFS Custom Color Matching

Don't forget, if the RAL shades shown here aren't quite right, there are thousands of other IFS colors and effects available. We are color experts and will also custom color match to create the exact shade that you need. Talk to us for more details.

Make any RAL shade your own with IFS Altered RALs

Take any RAL shade and add the following effects to them:

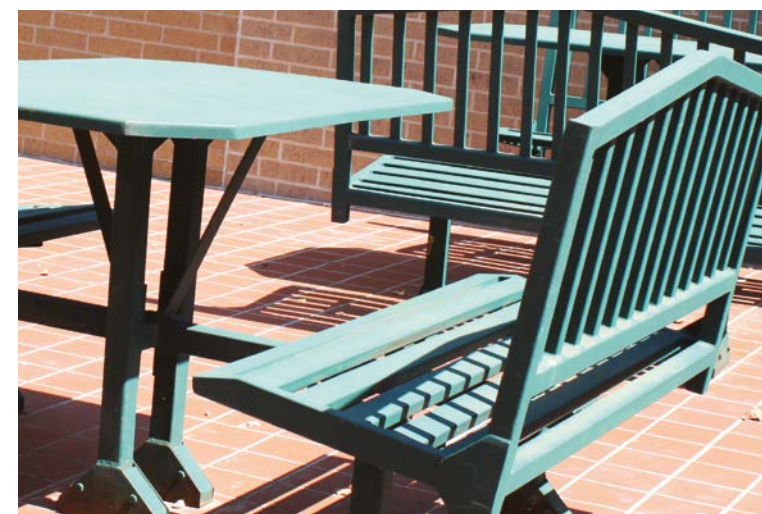
- Sparkle metallic
- Anti-skid
- River texture
- Mini texture
- Silver vein
- Semi gloss
- OGF

Altered RAL sample panels are available from your local representative or call **866.437.2864** to request them.

Standard polyester IFS codes begin with PLSF. Super Durable IFS codes begin with SLSF. Colors are a digital representation only and are not a true reflection of the actual powder coated surface. In addition screens are not calibrated, so colors appear differently. DO NOT choose a color based on an online representation. Ask for a free sample panel.



IFS Coatings RAL Collection



3601 N. Interstate 35
Gainesville, TX 76240
P: 940 668 1062
www.ifscoatings.com

Colors are a digital representation only and are not a true reflection of the actual powder coated surface. In addition screens are not calibrated, so colors appear differently. DO NOT choose a color based on an online representation. Ask or a free sample panel.

Any recommendations contained herein or any information given by any IFS Coatings representative is based on tests and information believed to be accurate. However, since we have no control over the conditions under which our products are transported, stored, handled or used by purchasers, all recommendations and sales are made on condition that IFS Coatings will not be held responsible for any damages resulting from their use. No representative of ours has any authority to waive or change this provision.

© IFS Coatings 2015 Printed in Italy March 2015



IFS RAL COLLECTION

IFS CUSTOM COLOR MATCHING AVAILABLE

EFFECTS AVAILABLE ON ANY SHADE

Standard polyester IFS codes begin with PLSF. Super Durable IFS codes begin with SLSF. Colors are a digital representation only and are not a true reflection of the actual powder coated surface. In addition screens are not calibrated, so colors appear differently. DO NOT choose a color based on an online representation. Ask for a free sample panel.

Standard polyester IFS codes begin with PLSF. Super Durable IFS codes begin with SLSF. Colors are a digital representation only and are not a true reflection of the actual powder coated surface. In addition screens are not calibrated, so colors appear differently. DO NOT choose a color based on an online representation. Ask for a free sample panel.

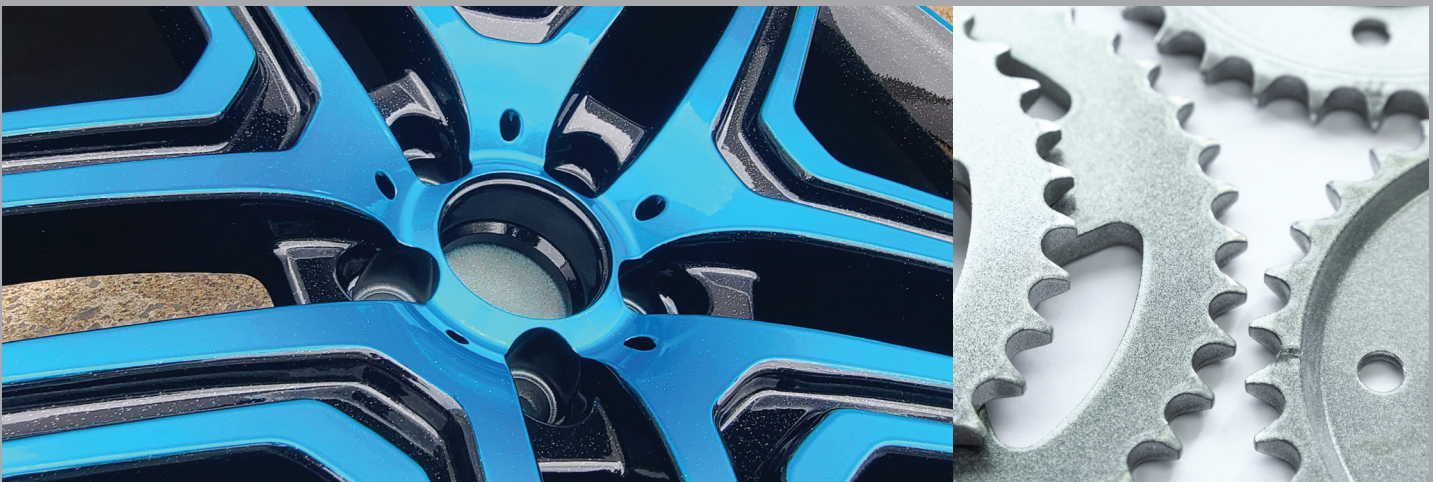
Standard polyester IFS codes begin with PLSF. Super Durable IFS codes begin with SLSF. Colors are a digital representation only and are not a true reflection of the actual powder coated surface. In addition screens are not calibrated, so colors appear differently. DO NOT choose a color based on an online representation. Ask for a free sample panel.



Drylac®
Powder Coatings

Metallics & Special Effects

metallic and special effect powder coatings | Volume 2



Vol. 2

Metallic surface finishes for exterior and interior applications

This color card combines popular exterior and interior **Metallic** 2nd Generation Bonded Metallic powder coatings, engineered with the designer, the coater, and the OEM in mind.

TIGER Drylac® 2nd Generation Bonded Metallics are manufactured in-house using an advanced proprietary technology 2nd Generation Bonding process that produces superior quality and a high degree of color consistency during the application process.

2nd generation bonded metallic surface finishes offer unique benefits including batch-to-batch consistency, recyclability, a uniform / flawless finish, high first pass transfer efficiency and low gun settings leading to less equipment wear. With **TIGER Drylac® Metallics**, there is no need for special equipment during application, no dry spray, clouding, stripping or picture framing and most importantly, metallic particles do not segregate during transportation and storage.

For proper application of 2nd Generation Bonded Metallic surface finishes, it is recommended to carefully read the “Guidelines for application of metallic powder coatings” and adhere to its contents. This document is downloadable from TIGER’s website.

Surface finishes designed for **exterior applications** are also suitable for interior applications. Surface finishes designed for interior **applications (Series 09, Series 69)** do not offer adequate UV resistance for exterior applications. Applying a clear topcoat will not increase its UV resistance.

Antique/Vein

Polyester/epoxy and polyester-based textured metallic surface finishes (also known as antique or vein) in **TIGER Drylac® Series 09, Series 49** and **Series 59** are a simple solution to hide uneven surfaces. They are easy to maintain and add visual dimensional layers to objects that otherwise show no texture. While antique/vein surface finishes in Series 09 require a clear topcoat to increase durability and chemical resistance, in Series 49 and 59 they do not require a clear topcoat.

Anodized Effect

Anodized effect is a line of super durable polyester TGIC-free AAMA 2604-compliant powder coatings developed to emulate anodized finishes. The finishes are formulated for aluminum extrusions, cast pieces and other ferrous and nonferrous substrates. They are suitable for Corona and Tribo application equipment.

Brilliant Reflective

Brilliant reflective surface finishes such as **TIGER Drylac® Mirror Silver 49/91260, Chrome OGF 49/91312** and **Kromezone 49/95001** are high performance finishes. The extreme brilliance of this type of finish relies on the high flow and smoothness of the base powder coating and the perfect alignment of metallic particles at the surface. Substrate surface impurities will appear as noticeable protrusions, therefore cleanliness of the substrate before application is critical. Any substrate surface imperfections as well as impurities or metal shavings will be clearly visible. These surface finishes require a clear topcoat to protect the thin layer of aluminum flake.

Dormant Transparent

Deep and dynamic finishes are obtained through the application of two coats. The Dormant effect will only evolve after the application of a clear topcoat. Swatches in this card use **TIGER Drylac® Bengal Clear Glossy 49/01234**. Additional eye-catching finishes can be achieved by using other **TIGER Drylac®** clear coats and clear glitters such as **TIGER Drylac® Silver 49/00320** or **Twilight 49/00390**. These finishes are suitable for Corona application equipment. Best inter-coat adhesion is achieved by applying the basecoat using Corona and the clear topcoat using Tribo equipment.

Glitter

These polyester-based finishes contain sparkling metallic flakes suspended in a clear coat. They can be applied over any base coat color, and provide a high range of effects by just changing the base coat color. The **Twilight** version, **TIGER Drylac® 49/00390** provides multiple-color sparkles to any color.

Hammertone

Hammertone finishes look as if the surface was textured with a ball-peen hammer. The undulated contrast created by the underlying base color adds texture to the finish. To obtain an adequate film thickness in the valleys of the texture, minimum film thickness guidelines must be observed. Hammertone finishes are suitable for Corona application equipment.

Iron glimmer

Polyester-based smooth and fine textured surface finishes provide a metallic look while containing little or no metallic pigments. They are ideal for one-coat finishing solutions.


Pearlescent

Polyester-based surface finishes containing mica pigments offer reflective metallic values reminiscent of natural pearls. They provide luster and shine.

Outgassing Forgiving (OGF) properties

OGF powder coatings are developed for casting, hot galvanized and forged steel, aluminum flame-sprayed and other porous and outgassing prone substrates. OGF additives can be added to any **TIGER Drylac®** powder coating. However, for large volumes, it is recommended to produce the powder coating in an OGF formulation on a custom order basis.

2nd generation bonded metallic surface finishes exhibited in this color card include:

 Underwriters Laboratories Inc. (UL) Recognition.	interior applications	Epoxy/polyester (hybrid)	Series 09
		Epoxy	Series 69
interior and exterior (non-architectural) applications		Polyester TGIC	Series 39 Series 49
		Polyester TGIC-Free	Series 59 Series 139 Series 149
		Polyester urethane	Series 44
		Polyester TGIC Super Durable	Series 38
exterior (architectural) applications		Polyester TGIC-free Super Durable	Series 61 Series 138

Disclaimer

Color swatches featured in this color chart have been matched to color standards at a **45-degree visual angle under a D65 Daylight** primary source. RAL numbers are matched as approximate as possible to the RAL Standards. Gloss level on metallic and fine textured swatches cannot be accurately measured.

The swatches are to be considered as an indication only. In practice, discrepancy between the color swatch and the actual powder coating may arise. This is due to paper and ink limitations, the influence of light and heat during the color chart production, as well as gloss level, substrate, surface variations, binder systems and pigments, coating thickness and cure oven conditions used during application.

For an accurate color and finish assessment, it is recommended to obtain a powder coated sample panel from **TIGER Drylac®**.

Please contact **TIGER Drylac®** for more information if using the following products found in this chart in a two-coat system consisting of a primer or e-coat base coat.

Products marked with RED text: Limited stock is available, please consult the stock indicator on our Webshop or contact TIGER at 1 (800) 243-8148. Once stock is depleted, product will be moved to Custom Order and minimum quantities of 500 kg/1,100 lb will apply.



anodized effect | 61/78003
Champagne



**anodized effect | 61/78002
Light Bronze**



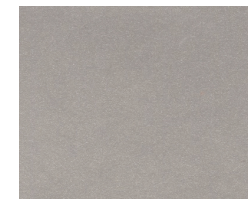
**matte | 49/15240
Beige C32 One Coat**



fine texture | 38/68130
Greco



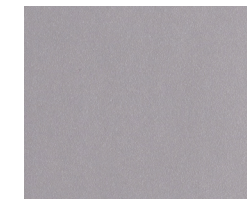
anodized effect | 61/68002
Medium Bronze



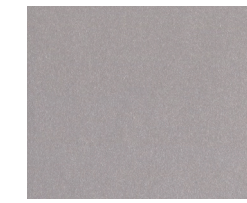
anodized effect | 61/00015
Silver (clear)



matte | 49/90500
Silver Matte



glossy | 49/92790
No-Smudge Silver



glossy | 49/90380
Standard Silver *|***



glossy | 49/99999
Bengal Silver ***



matte | 49/66230
Brown C33 One Coat



**glossy | 09/60610
Beige Metallic
Interior only**



matte | 09/68635
High Lights Bronze
Interior only



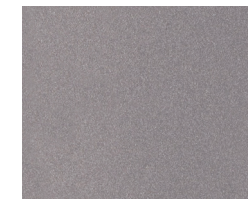
matte | 49/61120
Low Lights Bronze



matte | 49/66220
Bronze C34 One Coat



glossy | 49/90450
Sparkle Silver **|***



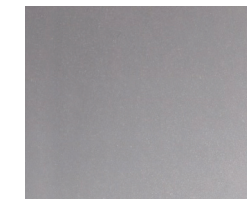
glossy | 49/93061
Stardust Silver Dark Metallic



glossy | 38/90080
Brilliant Sparkle Silver **|***



**glossy | 59/93370
APRX to RAL 9006 Gloss One Coat**



brilliant reflective | 49/95001
Kromezone *



designer finish | 49/60015
Pyrite Fine Texture



fine texture | 59/91611
Oil Rubbed Bronze Fine Texture



anodized effect | 61/68001
Dark Bronze



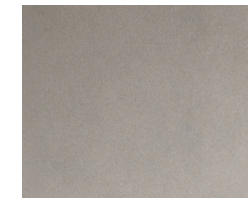
matte | 39/60020
Bronze Matte



fine texture | 09/68560
Rustico
Interior only



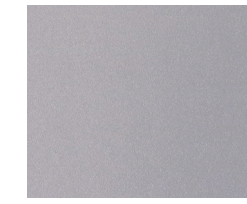
brilliant reflective | 49/91260
Mirror Silver *



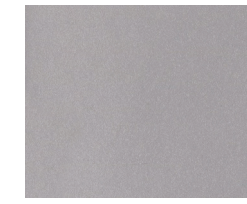
brilliant reflective | 49/91312
Chrome OGF *|***



fine texture | 09/90530
Silver Fine Texture
Interior only



glossy | 138/91021
Anodized Silver



matte | 69/91390
Epoxy Silver Matte *
Interior only



glossy | 09/80170
Anthracite Metallic
Interior only



fine texture | 418/79680
Anthracite Metallic



matte | 09/60600
Bronze Metallic
Interior only



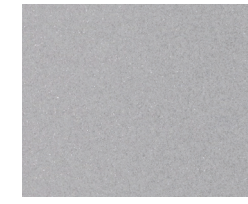
fine texture | 38/68192
Gold Brown



**glitter | 149/90009
Black Stardust ****



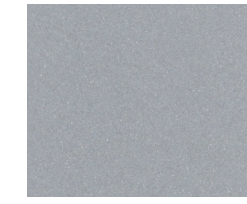
matte | 49/92910
APRX to RAL 9006 Matte One Coat



glossy | 139/90000
Silver



pearlescent | 149/18140
Pearlescent White ***



glossy | 49/92890
APRX to RAL 9006 Gloss One Coat



**glossy | 38/90010
Marine Silver One Coat**



**glitter | 49/00390
Twilight (top coat) ****
(Black 49/82830 base coat)



**glitter | 49/00320
Silver (top coat) ****
(Black 49/82830 base coat)



glimmer smooth | 49/70190
P 2 Glimmer



glimmer smooth | 49/70200
P 3 Glimmer



glimmer smooth | 49/70220
P 4 Glimmer



matte | 49/92380
Silver Matte One Coat



glossy | 38/97445
Starline Silver



**glossy | 09/80340
Grey Metallic ***
Interior only



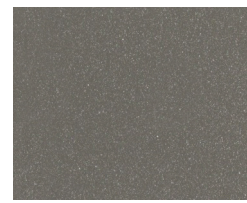
glossy | 59/95726
Gun Metal



pearlescent | 38/90015
Pearl Dark Grey



glimmer smooth | 49/80180
P 5 Glimmer



glimmer smooth | 49/70210
P 6 Glimmer



glimmer smooth | 49/80190
P 7 Glimmer



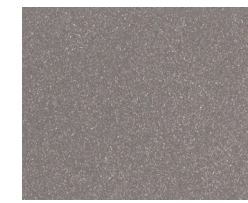
glimmer smooth | 49/70230
P 14 Glimmer



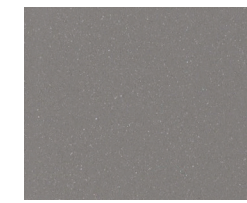
**glimmer smooth | 49/77790
DB 702 Glimmer**



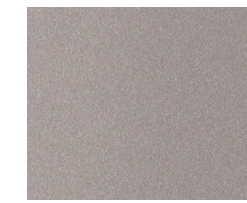
glossy | 49/92900
Silver Gloss One Coat



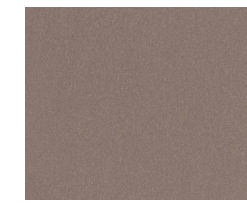
**glossy | 09/90460
APRX to RAL 9007 Gloss Silver
Interior only**



glossy | 49/92880
APRX to RAL 9007 Silver Gloss



glossy | 49/91558
Twinkle



glossy | 49/96114
Satin Nickel *

Products marked with RED text: Limited stock is available, please consult the stock indicator on our Webshop or contact TIGER at 1 (800) 243-8148. Once stock is depleted, product will be moved to Custom Order and minimum quantities of 500 kg/1,100 lb will apply.

**NEW
COLLECTION**



glossy | 44/91501
Plata Focaris 62

semi gloss | 149/93010
Starburst Silver

glossy | 149/99010
Silver Ore *

satin | 138/68195
Sun Kissed Bronze

dormant transparent | 59/48001
Ice Blue ▲▲

dormant transparent | 59/38002
Raspberry ▲▲



glimmer fine texture | 49/70789
DB 702 Fine Texture Glimmer

glimmer smooth | 49/84340
DB 703 Glimmer

glimmer fine texture | 49/70785
US 1 Fine Texture Glimmer

glimmer fine texture | 49/70787
US 2 Fine Texture Glimmer

glossy | 38/15020
Champagne 303



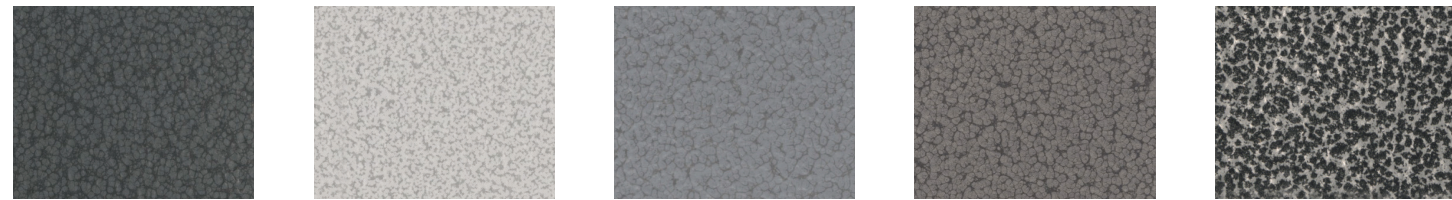
matte | 49/92780
Copper Metallic *

pearlescent | 38/60064
Pearl Copper

fine texture | 09/68420
Sandblast Copper ***
Interior only

glossy | 49/90137
Sahara Gold *

pearlescent | 38/40127
Pearl Night Blue



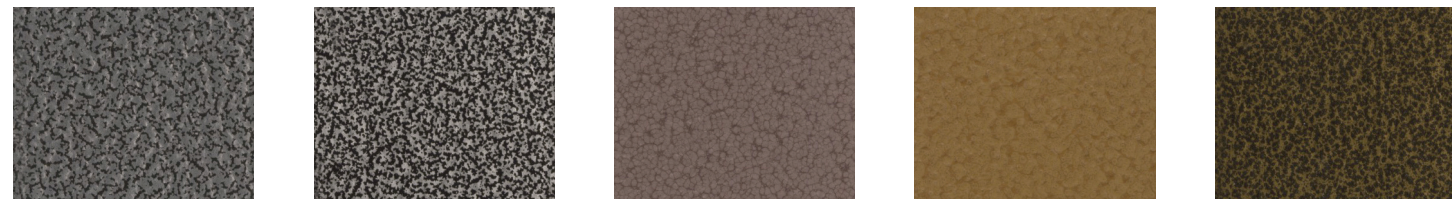
hammerstone | 39/80005
Black

antique/vein | 09/90170
Grey Hybrid *
Interior only

hammerstone | 39/90980
Light Silver

hammerstone | 39/90020
Silver

antique/vein | 59/90820
Antique Silver Metallic



antique/vein | 49/93240
Silver

antique/vein | 09/90190
Silver Hybrid *
Interior only

hammerstone | 39/60002
Sepia

hammerstone | 39/90280
Gold Brown

antique/vein | 49/91190
Gold



antique/vein | 59/90050
Antique Bronze Metallic

hammerstone | 39/40003
Malachite

hammerstone | 39/50002
Reseda

hammerstone | 39/40002
Sapphire

hammerstone | 39/40750
Capri



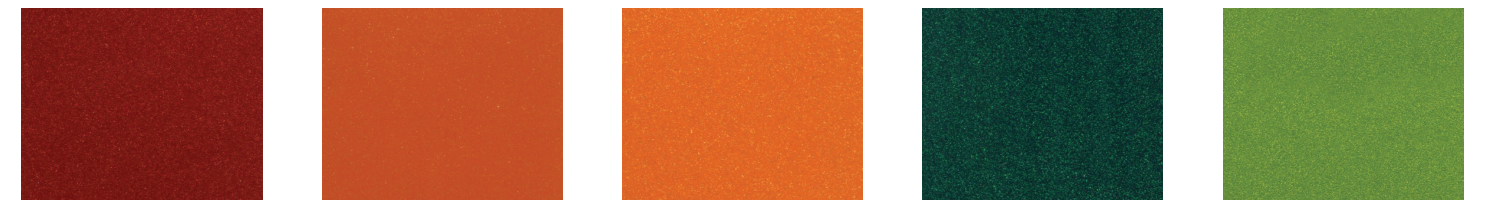
antique/vein | 09/90180
Copper Hybrid *
Interior only

antique/vein | 49/90620
Copper

antique/vein | 59/90821
Antique Copper Metallic

dormant transparent | 49/30193
Sparkle Burgundy ▲▲

dormant transparent | 49/30028
Sparkle New Red ▲▲



dormant transparent | 49/25002
Sparkle Copper ▲▲

dormant transparent | 49/23531
Sparkle Bomber Orange ▲▲

dormant transparent | 49/25006
Sparkle Light Orange ▲▲

dormant transparent | 49/50024
Sparkle Green ▲▲

dormant transparent | 49/50032
Sparkle Granny Smith ▲▲



dormant transparent | 49/40074
Sparkle Sky Blue ▲▲

dormant transparent | 49/40233
Sparkle Electric Blue ▲▲

dormant transparent | 49/40940
Blue ▲▲

dormant transparent | 49/41100
Violet ▲▲

Metallics

- * To increase durability and chemical resistance, TIGER Drylac® recommends the application of a clear topcoat for interior and exterior applications.
- ** To enhance the depth of the finish, TIGER Drylac® suggests the application of a clear top coat.
Recommended clear top coats | For interior: Clear Flat Matte epoxy 69/00300 | **For exterior and interior:** Clear Matte acrylic hybrid 16/00030 | Clear Satin polyester TGIC 49/00280 | Clear Glossy polyester TGIC 49/00530 | Bengal Clear Glossy polyester TGIC 49/01234 | Clear Glossy polyester TGIC super durable 38/00001 | Anti-graffiti Clear Glossy polyester-urethane 44/00018 | Antimicrobial Clear 44/00100.
- *** Due to semi transparency of the product, the opacity of the color and finish will depend upon the substrate type and the film thickness. A film below 2.8 mils will exhibit limited hiding.

Special Effects

- ▲ Candy transparent and one-coat fluorescent finishes provide limited hiding, and the color will be influenced by the thickness of the coating or the color of the substrate/base coat. Candy transparent and fluorescent finishes have limited UV stability..
- ▲▲ Two-coat dormant transparent system. Applied as basecoat and a clear glossy topcoat | Recommended clear topcoats for interior and exterior: Clear Flat Matte acrylic hybrid 16/00030 | Geronimo satin polyurethane 44/00049 | Clear Semi Matte polyester TGIC 49/00280 | Bengal Clear Glossy polyester TGIC 49/01234 | Clear High Gloss SD polyester TGIC super durable 38/00001 | Clear Anti-Graffiti Glossy polyurethane 44/00018 | Antimicrobial Clear 44/00100.
- ▲▲▲ Two-coat fluorescent system. Applied over a high gloss smooth such as White Base Coat 49/11000 or Bengal White 149/1111.

ONLINE VERSION: The colors/effects shown here will deviate from the original color/effect due to screen technology.

High performance special effects for exterior and interior applications

This color card displays a collection of special effect finishes intended to provide a distinctive surface appearance while protecting the substrate.

Candy Transparent

Is a range of transparent topcoats with a candy effect. Colors shown in this color card are representative of coatings on aluminum substrates. Substrates such as steel, chrome and brushed aluminum are also suitable for use with this finish. To achieve an equal finish with other substrates, it is recommended to use a shiny metallic effect as a basecoat, such as **TIGER Drylac® Mirror Silver 49/91260**, **Kromezone 49/95001**, **Chrome OGF 49/91312** or **Sparkle Silver 49/90450**. Candy transparent finishes are suitable for Corona and Tribo application equipment. Candy transparent finishes provide limited hiding and have limited UV stability.

Designer Finish

Designer finish is a line developed with furniture and lighting designers in mind. These finishes provide a classic look in two or three-tone colors and textures simulating the oxidation of copper, natural rocks, and stones. They are suitable for Corona application equipment.

Flourescent

Flourescent finishes are available as one-coat or two-coat systems. In a two-coat system, the flourescent powder coating must be applied over a smooth high gloss white such as **TIGER Drylac® White Basecoat 49/11000**. To achieve a custom look, the flourescent finish can also be applied over **TIGER Drylac® Mirror Silver 49/91260**, **Kromezone 49/95001** or **Sparkle Silver 49/90450**. Flourescent finishes are suitable for Corona and Tribo application equipment. One-coat flourescent finishes provide limited hiding. One-coat and two-coat flourescent finishes have limited UV stability.

TIGER Drylac® standard and custom-colors in **Series 39** and **Series 49**; made in the USA, Canada and Mexico, are periodically recertified and carry the UL (Underwriter Laboratory) Recognized Component Mark (Spec DTOV2.MH27573).

Special effects powder coatings in this color chart include:



Underwriters Laboratories Inc.
(UL) Recognition.

**interior and exterior
(non-architectural) applications**

Polyester urethane Series 44

Polyester TGIC Series 49

Polyester TGIC-Free Series 59
Series 149

exterior (architectural) applications Polyester TGIC-free Super Durable Series 61

Products marked with RED text: Limited stock is available, please consult the stock indicator on our Webshop or contact TIGER at 1 (800) 243-8148. Once stock is depleted, product will be moved to Custom Order and minimum quantities of 500 kg/1,100 lb will apply.

SPECIAL EFFECTS



candy transparent | 49/20180
Brass ▲



candy transparent | 49/20170
Gold ▲



candy transparent | 49/63130
Copper ▲



candy transparent | 49/31570
Candy Raspberry ▲



candy transparent | 49/33340
Candy Red ▲



candy transparent | 49/35810
Transparent Red ▲



candy transparent | 49/54810
Candy Lime Green ▲



candy transparent | 49/55730
Transparent Green ▲



candy transparent | 49/42130
Candy Teal ▲



candy transparent | 49/46110
Transparent Blue ▲



candy transparent | 49/43600
Candy Blue ▲



candy transparent | 149/41480
Candy Purple ▲



candy transparent | 49/80375
Black Smoke Transparent ▲



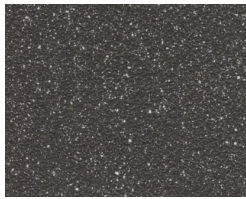
candy transparent | 49/80924
Black Smoke Transparent Matte ▲



anodized effect | 61/80079
Black



designer finish | 44/10033
Quartzite Design Texture Matte



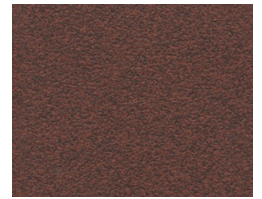
designer finish | 44/80026
Graphite Design Texture Matte



designer finish | 49/62711
Rust Fine Texture



designer finish | 44/60034
Breccia Design Texture Matte



designer finish | 44/60035
Lava Design Texture Matte



fluorescent two-coat | 49/30760
Red ▲ | ▲▲▲▲



fluorescent one-coat | 49/24620
Red Orange ▲



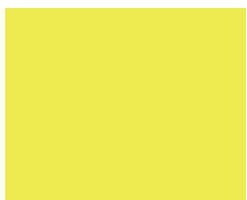
fluorescent one-coat | 49/24610
Orange ▲



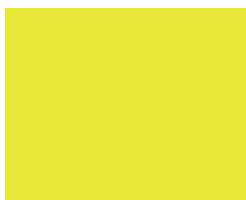
fluorescent two-coat | 49/24080
Orange ▲ | ▲▲▲▲



fluorescent one-coat | 49/22200
Yellow ▲



fluorescent one-coat | 59/20043
Neon Yellow ▲



fluorescent two-coat | 49/21500
Yellow ▲ | ▲▲▲▲



fluorescent one-coat | 49/51340
Green ▲

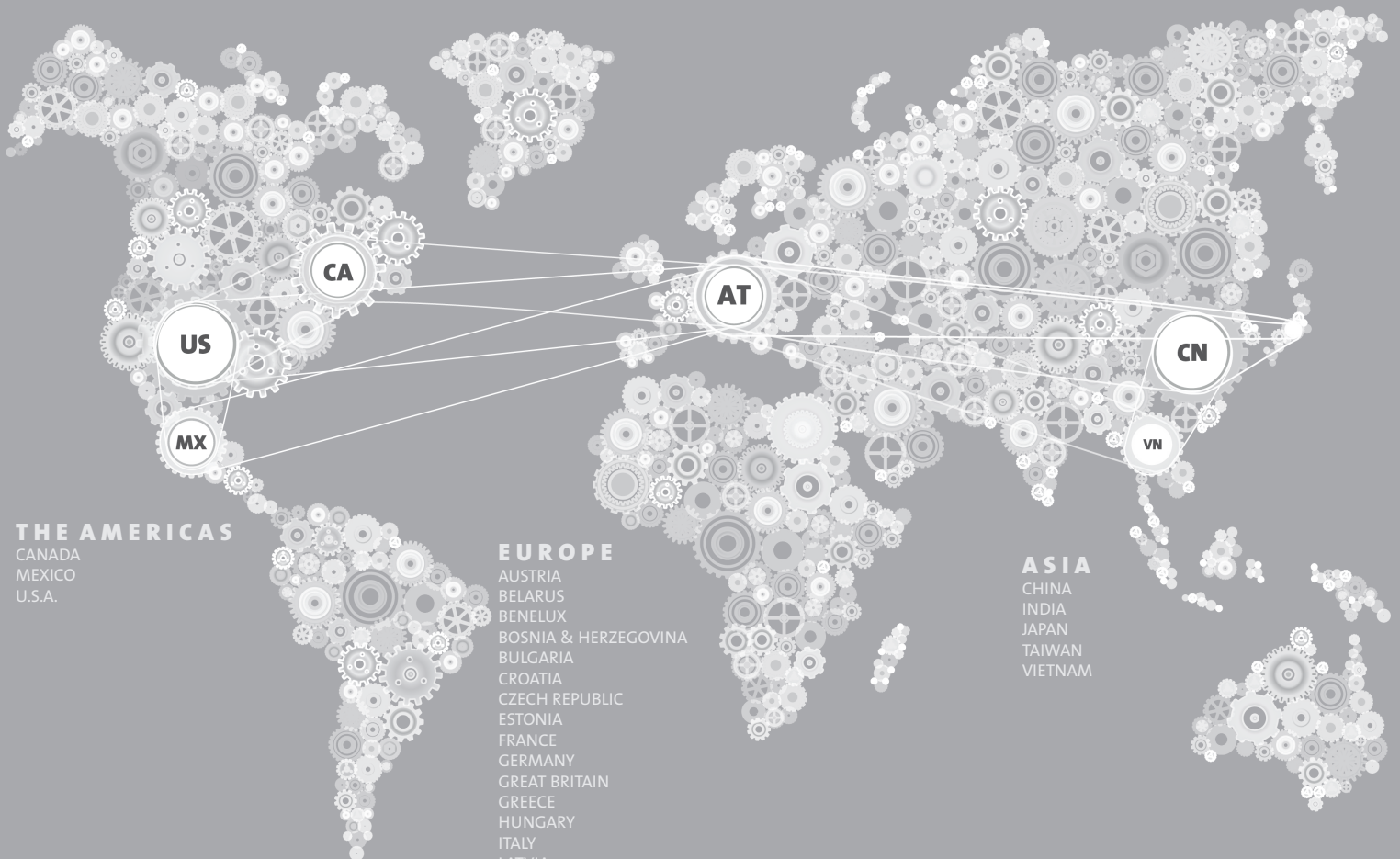


fluorescent one-coat | 59/30075
Neon Pink ▲



fluorescent two-coat | 49/30430
Bright Pink ▲ | ▲▲▲▲

TIGER WORLDWIDE NETWORK



THE AMERICAS

CANADA
MEXICO
U.S.A.

EUROPE

AUSTRIA
BELARUS
BENELUX
BOSNIA & HERZEGOVINA
BULGARIA
CROATIA
CZECH REPUBLIC
ESTONIA
FRANCE
GERMANY
GREAT BRITAIN
GREECE
HUNGARY
ITALY
LATVIA
LITHUANIA
POLAND
ROMANIA
SERBIA & MONTENEGRO
SLOVAKIA
SLOVENIA
SPAIN
SWITZERLAND
TURKEY
UKRAINE

ASIA

CHINA
INDIA
JAPAN
TAIWAN
VIETNAM



Check out the TIGER Drylac® Webshop!
Order stock and standard products online!
For more information visit our website.

tiger-coatings.com



US/Canada: 1 (800) 243-8148
Mexico: 01 (800) 368-4437



Powder coatings for interior industrial applications

Interior and Exterior Applications

TIGER Drylac® Series 149 and Series 138 are Polyester TGIC-Free weather resistant powder coatings. TIGER Drylac® Series 149 is suitable for interior and exterior applications while Series 138 is a super durable powder coating compliant to AAMA 2604* with excellent weather resistance properties for high performance architectural exterior applications (*AAMA 2604 compliance dependent upon the color and/or effect).

Standard interior applications

TIGER Drylac® Series 09 is a polyester/epoxy-based standard cure powder coating. When lower or faster cure parameters are required, TIGER Drylac® Series 89 polyester/epoxy-based is recommended. Both TIGER Drylac® Series 09 and TIGER Drylac® Series 89 are ideal for applications such as electrical and electronic enclosures, store fixtures, shelving, office and school furniture, ceiling panels, cladding components, radiators, tools and equipment, toys and machinery parts. They provide very good mechanical and flow properties, excellent coverage and good storage stability.

Chemical resistance

TIGER Drylac® Series 69 is an epoxy-based powder coating with excellent chemical and corrosion resistance, very good mechanical and flow properties and good storage stability. It provides excellent coverage. It is ideal for laboratory equipment, machinery parts, pump housing as well as surfaces where increased chemical resistance is required.

Specialties

TIGER Drylac® Series 09 Electrostatic Dissipative (ESD) powder coatings allow a controlled dissipation of the static buildup or prevent the buildup of a high charge in applications such as computer hoods and electronic cabinetry. Resistivity measurements in the lab measure 10⁶ to 10⁹ ohms. It is possible to custom-match colors in a range from dark grey to black.

FDA-compliance

TIGER Drylac® Series 09 FDA-compliant powder coatings are in conformity with the Food and Drug Administration's raw materials requirements of 21 CFR 175.300 "Resinous and Polymeric Coatings". FDA-compliant powder coatings also "conform" and "comply" with the requirements of 21 CFR 178.3297 "Colorants for Polymers". TIGER Drylac® has not conducted compliance tests, but rather relies on the raw materials suppliers to provide the appropriate documentation. It is the buyer's and customer's responsibility to test applied parts carrying the mention "FDA approved", as may be required by their customers.

Textured and smooth gloss levels

Smooth flat matte gloss levels range from 0 to 15 units.

Smooth matte gloss levels range from 16 to 25 units.

Smooth semigloss gloss levels range from 55 to 65 units.

Smooth glossy gloss levels range from 80 to 95 units.

Fine and rough textured gloss levels cannot be measured and are, therefore, accorded visually.

Disclaimer

The colors featured in this color card are matched as accurately as possible to **RAL standards**. Some deviations from the RAL standards might be noticeable due to texture and/or gloss level of the surface finish. Swatches have been matched to color standards at a **45-degree visual angle under a D65 Daylight** primary source. Gloss level on fine and rough textured swatches cannot be accurately measured. The swatches are to be considered as an indication only. In practice, discrepancy between the color swatch and the actual powder coating may arise. This is due to paper and ink limitations, the influence of light and heat during the color card production, as well as gloss level, substrate, surface variations, binder systems and pigments, coating thickness and cure oven conditions used during application. For an accurate color and finish assessment, it is recommended to obtain a powder coated sample panel from **TIGER Drylac®**.

TIGER WORLDWIDE NETWORK



9990000300087 03/2022



Check out the TIGER Drylac® Webshop!
Order stock and standard products online!
For more information visit our website.



tiger-coatings.com

US/Canada: 1 (800) 243-8148

Mexico: 01 (800) 368-4437



RAL Colors + Textured and Smooth Based on RAL | Interior and exterior applications | Volume 2



Color cards available from TIGER Drylac®

3D Metallics

Features a range of colors that provide a new dimension in effect powder coatings. TIGER Drylac® 3D Metallics coatings feature liquid paint-like 3D effects in one-coat. Brilliant and bright effects are visible from all angles with minimal equipment influence. Ideal for multi-coater projects and architects.

Essentials

This color card features a wide selection of stock surface finishes intended for industrial applications such as residential window and door frames, lawn mowers, garden equipment, patio furniture, fences, electrical boxes, light fixtures, automotive accessories, bicycles, motorcycles, agricultural equipment and machinery, sporting goods as well as other industrial applications.

It includes a wide selection of black and white colors. Colors not displayed in this color card might appear in another TIGER Drylac® color card or can be formulated-to-order.

Colors shown in this color card are suitable for exterior and interior applications. An exception to this are colors formulated in TIGER Drylac® Series 69; which are intended for interior applications only.

Metallics + Special Effects

Metallics

This color card combines popular exterior and interior bonded metallic powder coatings, designed with the designer, the coater and the OEM in mind. TIGER Drylac® metallic surface finishes are entirely manufactured in-house using an advanced proprietary technology bonding process that imparts advanced quality and a high degree of color consistency during the application process.

TIGER Drylac® metallic surface finishes offer unique benefits including batch-to-batch consistency, recyclability, uniform and flawless finish, higher first pass transfer efficiency and lower gun settings leading to less equipment wear. With TIGER Drylac® metallics there is no need for special equipment during application, no dry spray, clouding, stripping or picture framing and most importantly, particles do not segregate during transportation and storage.

TIGER Drylac® metallic surface finishes featured in this card include: Antique/Vein, Glitter, Iron Glimmer, Brilliant Reflective, Pearlescent and Outgassing Forgiving (OGF).

Special Effects

This color card displays a collection of several lines of special effect finishes intended to provide a distinctive surface appearance while protecting the substrate from corrosion and other elements. Finishes featured in this card include: Anodized, Candy Transparent, Designer Finishes, Dormant Transparent, Fluorescent and Hammertones.

Super Durable

This color card features a wide selection of TIGER Drylac® Series 138 TGIC-Free high performance powder coatings intended for architectural applications such as metal façades, steel constructions, stadium seating, railings and residential window and door frames.

TIGER Drylac® Super Durable is also suitable for industrial applications where a high performance weather resistance is required such as agricultural equipment, external ship components, military equipment, communication towers, playground equipment, patio furniture and garden equipment.

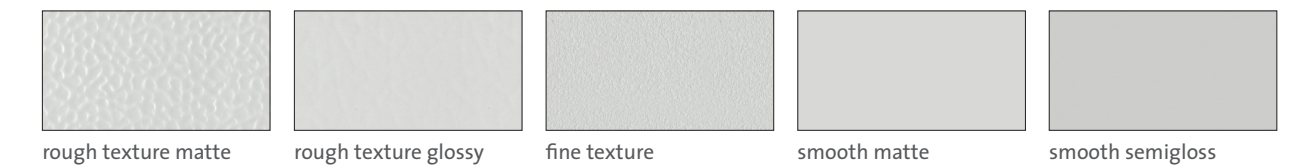


Vol. 2



Products marked with RED text: Limited stock is available, please consult the stock indicator on our Webshop or contact TIGER at 1 (800) 243-8148. Once stock is depleted, product will be moved to Custom Order and minimum quantities of 500 kg/1,100 lb will apply.

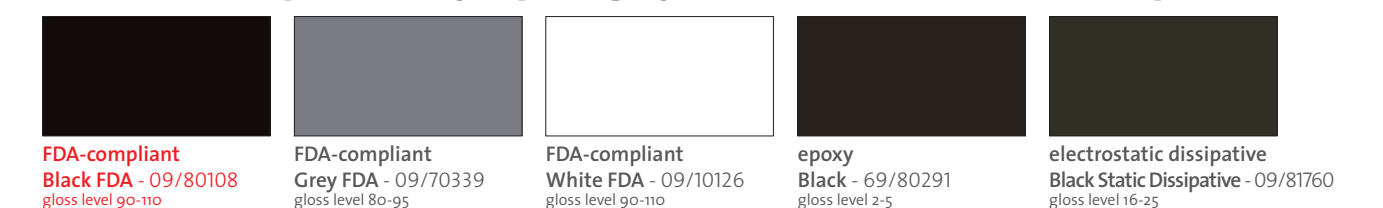
Textured and Smooth Finishes



The chart below lists all the RAL colors available in Textured and Smooth Finishes

approx RAL color	rough texture matte	rough texture glossy	fine texture	smooth matte	smooth semigloss
RAL 1013	09/10030	89/10020	89/10990	09/10870	-
RAL 1015	-	89/15080	89/15430	09/15380	-
RAL 1021	-	89/20120	-	-	-
RAL 3002	-	89/30560	89/30450	-	-
RAL 5003	-	89/40930	89/41040	-	-
RAL 5009	-	-	89/41050	-	-
RAL 5010	09/41000	89/40480	89/41060	-	89/40880
RAL 5012	09/40110	89/40940	89/41070	-	-
RAL 5015	09/41130	89/41110	-	-	-
RAL 7001	-	89/71320	89/71460	-	-
RAL 7012	09/71410	-	89/71470	-	89/71200
RAL 7016	09/71420	-	89/71480	-	89/71260
RAL 7021	09/70110	-	89/71490	09/71190	-
RAL 7030	09/70160	-	89/71500	-	-
RAL 7032	09/70200	89/70190	89/71520	-	-
RAL 7035	09/70230	89/70220	89/71530	09/71230	89/71300
RAL 7038	09/71440	89/71380	89/71540	09/71240	-
RAL 7040	-	89/70640	89/70630	-	89/76930
RAL 7044	-	89/70690	89/70680	-	-
RAL 8014	09/60060	89/60050	-	09/60320	-
RAL 8019	09/60160	-	89/60850	-	-
RAL 9001	09/10060	-	89/11000	09/10880	-
RAL 9002	09/10090	-	89/11010	09/10890	-
RAL 9003	09/10980	89/10960	89/11020	09/10900	89/10950
RAL 9005	09/80440	39/81420	09/80160	09/80130	89/80400
RAL 9010	09/10130	-	89/11030	09/10120	89/10110
RAL 9011	09/80450	-	89/80410	-	-
RAL 9016	-	89/10430	89/10420	09/13120	89/13130

FDA-compliant | epoxy | electrostatic dissipative



ONLINE VERSION: The colors/effects shown here will deviate from the original color/effect due to screen technology.





DARK RED 90 GLOSS
P009-RD02

[TDS](#) [SDS](#)



RED 90 GLOSS
T009-RD03

[TDS](#) [SDS](#)



RED TEXTURE
T241-RD129

[TDS](#) [SDS](#)



RED 90 GLOSS
T009-RD01

[TDS](#) [SDS](#)



INTERNATIONAL ORANGE 90 GLOSS
T009-OG26

[TDS](#) [SDS](#)



SAFETY ORANGE 90 GLOSS
T009-OG01

[TDS](#) [SDS](#)



YELLOW 90 GLOSS
T009-YL71

[TDS](#) [SDS](#)



FS 13538 YELLOW 90 GLOSS
T009-YL14

[TDS](#) [SDS](#)



YELLOW 90 GLOSS
T009-YL01

[TDS](#) [SDS](#)



TRACTOR YELLOW 90 GLOSS
C209-YL130

[TDS](#) [SDS](#)



RAL 8028 TERRA BROWN 90 GLOSS
C209-BR358

[TDS](#) [SDS](#)



BRONZE 40 GLOSS
P004-BR23

[TDS](#) [SDS](#)



BROWN TEXTURE
T032-BR62

[TDS](#) [SDS](#)



FS 34094 OD GREEN FLAT
P000-GN264

[TDS](#) [SDS](#)



TRAFFIC GREEN 70 GLOSS
T007-GN16

[TDS](#) [SDS](#)



FS14066 D.O.T GREEN 70 GLOSS
T007-GN13

[TDS](#) [SDS](#)



GREEN 60 GLOSS
C006-GN03

[TDS](#) [SDS](#)



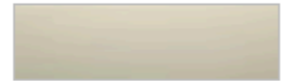
TRACTOR GREEN 90 GLOSS
C209-GN411

[TDS](#) [SDS](#)



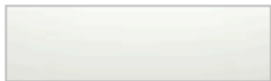
GREY HAMMER
C013-GR08

[TDS](#) [SDS](#)



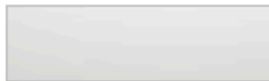
BEIGE HAMMER
T013-BG38

[TDS](#) [SDS](#)



WHITE HAMMER
T012-WH260

[TDS](#) [SDS](#)



WHITE HAMMER
T013-WH09

[TDS](#) [SDS](#)



RAL 7035 LIGHT GREY HAMMER
T013-GR185

[TDS](#) [SDS](#)



RED HAMMER
T013-RD15

[TDS](#) [SDS](#)



GREEN HAMMER
T013-GN220

[TDS](#) [SDS](#)



BRONZE HAMMER
T012-BR161

[TDS](#) [SDS](#)



BLACK HAMMER
T013-BK62

[TDS](#) [SDS](#)



BLACK HAMMER LOW GLOSS
E311-BK04 **

[TDS](#) [SDS](#)



BLUE TEXTURE
C241-BL544

[TDS](#) [SDS](#)



FS 25109 BLUE TEXTURE
T032-BL04

[TDS](#)



**RAL 8028 TERRA
BROWN 90 GLOSS**
C209-BR358

[TDS](#) [SDS](#)



BRONZE 40 GLOSS
P004-BR23

[TDS](#) [SDS](#)



BROWN TEXTURE
T032-BR62

[TDS](#) [SDS](#)



**FS 34094 OD GREEN
FLAT**
P000-GN264

[TDS](#) [SDS](#)



**TRAFFIC GREEN 70
GLOSS**
T007-GN16

[TDS](#) [SDS](#)



**FS14066 D.O.T
GREEN 70 GLOSS**
T007-GN13

[TDS](#) [SDS](#)



GREEN 60 GLOSS
C006-GN03

[TDS](#) [SDS](#)



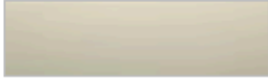
**TRACTOR GREEN 90
GLOSS**
C209-GN411

[TDS](#) [SDS](#)



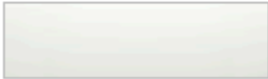
GREY HAMMER
C013-GR08

[TDS](#) [SDS](#)



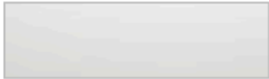
BEIGE HAMMER
T013-BG38

[TDS](#) [SDS](#)



WHITE HAMMER
T012-WH260

[TDS](#) [SDS](#)



WHITE HAMMER
T013-WH09

[TDS](#) [SDS](#)



**RAL 7035 LIGHT
GREY HAMMER**
T013-GR185

[TDS](#) [SDS](#)



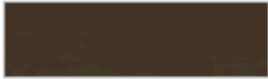
RED HAMMER
T013-RD15

[TDS](#) [SDS](#)



GREEN HAMMER
T013-GN220

[TDS](#) [SDS](#)



BRONZE HAMMER
T012-BR161

[TDS](#) [SDS](#)



BLACK HAMMER
T013-BK62

[TDS](#) [SDS](#)



**BLACK HAMMER LOW
GLOSS**
E311-BK04 **

[TDS](#) [SDS](#)



BLUE TEXTURE
C241-BL544

[TDS](#) [SDS](#)



**FS 25109 BLUE
TEXTURE**
T032-BL04

[TDS](#)



BLUE HAMMER
T013-BL468

[TDS](#) [SDS](#)



BLUE 90 GLOSS
T009-BL01

[TDS](#) [SDS](#)



BLUE 90 GLOSS
T009-BL05

[TDS](#) [SDS](#)



**DARK BLUE 80
GLOSS**
T008-BL20

[TDS](#) [SDS](#)



BLUE TEXTURE
C241-BL210

[TDS](#) [SDS](#)



BLUE 80 GLOSS
H308-BL03 **

[TDS](#) [SDS](#)



**BLACK
SUPERDURABLE 20
GLOSS**
T902-BK208



**WHITE
SUPERDURABLE 90
GLOSS**
C909-WH485



**BLACK
SUPERDURABLE 90
GLOSS**
P009-BK180



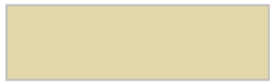
**ORANGE
SUPERDURABLE 90
GLOSS**
C909-OG201



**RED SUPERDURABLE
90 GLOSS**
C909-RD203



**YELLOW
SUPERDURABLE 90
GLOSS**
C909-YL201



ALMOND 90 GLOSS
T009-BG01



**FS 33446 DESERT
SAND FLAT**
P000-BG631



PUTTY TEXTURE
C241-BG218



BEIGE TEXTURE
T032-BG03



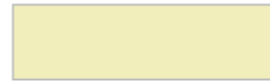
BEIGE 90 GLOSS
P009-BG02



**DESIGNER BEIGE 90
GLOSS**
T009-BG16



WHITE TEXTURE
T032-WH15



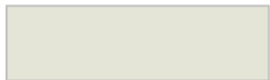
WHITE 80 GLOSS
H308-WH25 **



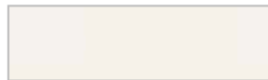
WHITE 90 GLOSS
T009-WH13



WHITE 90 GLOSS
P009-WH14



**ANTIQUÉ WHITE 30
GLOSS**
H303-WH16 **



**FS 27875 WHITE 50
GLOSS**
P005-WH01



WHITE 20 GLOSS
T002-WH08



**FROST WHITE 90
GLOSS**
H309-WH27 **



WHITE 90 GLOSS
P009-WH04



WHITE 90 GLOSS
T009-WH11



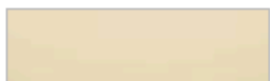
**HI-REFLECTIVE
WHITE 90 GLOSS**
T009-WH12



WHITE 70 GLOSS
T007-WH121



LC WHITE 90 GLOSS
C209-WH486



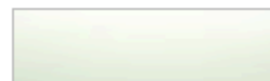
**RAL 9010 PURE
WHITE 90 GLOSS**
C209-WH492



**RAL 9010 PURE
WHITE TEXTURE**
C241-WH493



**RAL 9002 GREY
WHITE 90 GLOSS**
C209-WH490



WHITE TEXTURE
C031-WH120



GRAY PRIMER
E305-GR533 **





**YELLOW
SUPERDURABLE 90
GLOSS**
C909-YL201

[TDS](#) [SDS](#)



ALMOND 90 GLOSS
T009-BG01

[TDS](#) [SDS](#)



**FS 33446 DESERT
SAND FLAT**
P000-BG631

[TDS](#) [SDS](#)



PUTTY TEXTURE
C241-BG218

[TDS](#) [SDS](#)



BEIGE TEXTURE
T032-BG03

[TDS](#) [SDS](#)



BEIGE 90 GLOSS
P009-BG02

[TDS](#) [SDS](#)



**DESIGNER BEIGE 90
GLOSS**
T009-BG16

[TDS](#) [SDS](#)



WHITE TEXTURE
T032-WH15

[TDS](#) [SDS](#)



WHITE 80 GLOSS
H308-WH25 **

[TDS](#) [SDS](#)



WHITE 90 GLOSS
T009-WH13

[TDS](#) [SDS](#)



WHITE 90 GLOSS
P009-WH14

[TDS](#) [SDS](#)



**ANTIQUÉ WHITE 30
GLOSS**
H303-WH16 **

[TDS](#) [SDS](#)



**FS 27875 WHITE 50
GLOSS**
P005-WH01

[TDS](#) [SDS](#)



WHITE 20 GLOSS
T002-WH08

[TDS](#) [SDS](#)



**FROST WHITE 90
GLOSS**
H309-WH27 **

[TDS](#) [SDS](#)



WHITE 90 GLOSS
P009-WH04

[TDS](#) [SDS](#)



WHITE 90 GLOSS
T009-WH11

[TDS](#) [SDS](#)



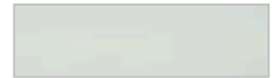
**HI-REFLECTIVE
WHITE 90 GLOSS**
T009-WH12

[TDS](#) [SDS](#)



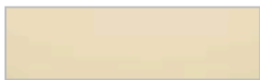
WHITE 70 GLOSS
T007-WH121

[TDS](#) [SDS](#)



LC WHITE 90 GLOSS
C209-WH486

[TDS](#) [SDS](#)



**RAL 9010 PURE
WHITE 90 GLOSS**
C209-WH492

[TDS](#) [SDS](#)



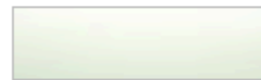
**RAL 9010 PURE
WHITE TEXTURE**
C241-WH493

[TDS](#) [SDS](#)



**RAL 9002 GREY
WHITE 90 GLOSS**
C209-WH490

[TDS](#) [SDS](#)



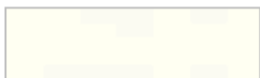
WHITE TEXTURE
C031-WH120

[TDS](#) [SDS](#)



GRAY PRIMER
E305-GR533 **

[TDS](#) [SDS](#)



WHITE PRIMER
E305-WH243 **

[TDS](#) [SDS](#)



**GRAY ANTI-GASSING
PRIMER**
H304-GR312 **

[TDS](#) [SDS](#)



**GRAY ZINC RICH
PRIMER**
E396-GR1372 **

[TDS](#) [SDS](#)



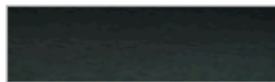
BLACK WRINKLE
C081-BK176

[TDS](#) [SDS](#)



BLACK WRINKLE
E381-BK173 **

[TDS](#) [SDS](#)



BLACK FINE TEXTURE
C241-BK303

[TDS](#) [SDS](#)



BLACK TEXTURE
E141-BK19 **

[TDS](#) [SDS](#)



BLACK TEXTURE
C241-BK01

[TDS](#) [SDS](#)



BLACK TEXTURE
T241-BK59

[TDS](#) [SDS](#)



BLACK FINE TEXTURE
C241-BK110

[TDS](#) [SDS](#)



BLACK TEXTURE
C241-BK109

[TDS](#) [SDS](#)



BLACK FLAT
E300-BK11 **

[TDS](#) [SDS](#)



BLACK FLAT
E300-BK147 **

[TDS](#) [SDS](#)



**FS 37038 BLACK
FLAT**
P000-BK247

[TDS](#) [SDS](#)



BLACK 10 GLOSS
T001-BK120

[TDS](#) [SDS](#)



**FS 27038 BLACK 20
GLOSS**
T002-BK08

[TDS](#) [SDS](#)



BLACK 20 GLOSS
H302-BK46 **

[TDS](#) [SDS](#)



BLACK 40 GLOSS
P004-BK02

[TDS](#) [SDS](#)



BLACK 50 GLOSS
T005-BK78

[TDS](#) [SDS](#)



BLACK 60 GLOSS
T006-BK05

[TDS](#) [SDS](#)



BLACK 60 GLOSS
C206-BK266

[TDS](#) [SDS](#)



BLACK 80+ GLOSS
T008-BK181

[TDS](#) [SDS](#)



**FS 17038 BLACK 90
GLOSS**
T009-BK12

[TDS](#) [SDS](#)



**FS 26307 GRAY 30
GLOSS**
P003-GR01

[TDS](#) [SDS](#)



**ANSI 49 GRAY 40
GLOSS**
P004-GR09

[TDS](#) [SDS](#)



**ANSI 61 GRAY 40
GLOSS**
P004-GR16

[TDS](#) [SDS](#)



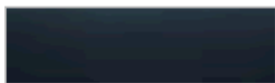
**RAL 7042 GREY 80
GLOSS**
P008-GR21

[TDS](#) [SDS](#)



**LIGHT GUNMETAL
GRAY 50 GLOSS**
H305-GR10 **

[TDS](#) [SDS](#)



DARK GRAY TEXTURE
C241-GR484

[TDS](#) [SDS](#)



**TELEPHONE GRAY
TEXTURE**
C241-GR85

[TDS](#) [SDS](#)



**PMS 427C GRAY
TEXTURE**
C241-GR487

[TDS](#) [SDS](#)



**PMS 431C GRAY
TEXTURE**
C241-GR483

[TDS](#) [SDS](#)



GRAY TEXTURE
C241-GR07

[TDS](#) [SDS](#)



**FS 37038 BLACK
FLAT**
P000-BK247
[TDS](#) [SDS](#)



BLACK 10 GLOSS
T001-BK120
[TDS](#) [SDS](#)



**FS 27038 BLACK 20
GLOSS**
T002-BK08
[TDS](#) [SDS](#)



BLACK 20 GLOSS
H302-BK46 **
[TDS](#) [SDS](#)



BLACK 40 GLOSS
P004-BK02
[TDS](#) [SDS](#)



BLACK 50 GLOSS
T005-BK78
[TDS](#) [SDS](#)



BLACK 60 GLOSS
T006-BK05
[TDS](#) [SDS](#)



BLACK 60 GLOSS
C206-BK266
[TDS](#) [SDS](#)



BLACK 80+ GLOSS
T008-BK181
[TDS](#) [SDS](#)



**FS 17038 BLACK 90
GLOSS**
T009-BK12
[TDS](#) [SDS](#)



**FS 26307 GRAY 30
GLOSS**
P003-GR01
[TDS](#) [SDS](#)



**ANSI 49 GRAY 40
GLOSS**
P004-GR09
[TDS](#) [SDS](#)



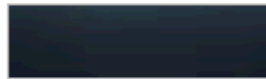
**ANSI 61 GRAY 40
GLOSS**
P004-GR16
[TDS](#) [SDS](#)



**RAL 7042 GREY 80
GLOSS**
P008-GR21
[TDS](#) [SDS](#)



**LIGHT GUNMETAL
GRAY 50 GLOSS**
H305-GR10 **
[TDS](#) [SDS](#)



DARK GRAY TEXTURE
C241-GR484
[TDS](#) [SDS](#)



**TELEPHONE GRAY
TEXTURE**
C241-GR85
[TDS](#) [SDS](#)



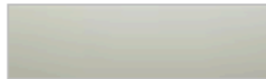
**PMS 427C GRAY
TEXTURE**
C241-GR487
[TDS](#) [SDS](#)



**PMS 431C GRAY
TEXTURE**
C241-GR483
[TDS](#) [SDS](#)



GRAY TEXTURE
C241-GR07
[TDS](#) [SDS](#)



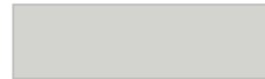
LIGHT GRAY TEXTURE
T241-GR142
[TDS](#) [SDS](#)



**RAL 7035 LIGHT
GRAY TEXTURE**
T241-GR851
[TDS](#) [SDS](#)



**ANSI 61 GRAY 80
GLOSS**
T008-GR736
[TDS](#) [SDS](#)



**RAL 7035 GRAY 90
GLOSS**
T009-GR230
[TDS](#) [SDS](#)



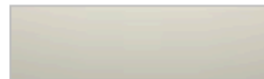
BAY GRAY TEXTURE
C241-GR305
[TDS](#) [SDS](#)



**PEARL WHITE
TEXTURE**
T031-WH06
[TDS](#) [SDS](#)



**QUARTZ GRAY
TEXTURE**
T243-GR301
[TDS](#) [SDS](#)



BEIGE TEXTURE
T241-BG137
[TDS](#) [SDS](#)



FLINT GRAY TEXTURE
T243-GR522
[TDS](#) [SDS](#)



**PLATINUM GRAY
TEXTURE**
T241-GR11
[TDS](#) [SDS](#)



COPPER VEIN
T375-BK07 *

[TDS](#) [SDS](#)



GOLD VEIN
T375-BK10 *

[TDS](#) [SDS](#)



SILVER VEIN
T375-BK26 *

[TDS](#) [SDS](#)



BLACK/WHITE VEIN
T075-WH34

[TDS](#) [SDS](#)



**COPPER VEIN
EXTERIOR**
T075-BK211

[TDS](#) [SDS](#)



**BRONZE
HAMMERTONE**
T064-BR24

[TDS](#) [SDS](#)



GRAY HAMMERTONE
T064-GR660

[TDS](#) [SDS](#)



**SILVER
HAMMERTONE**
T064-GR05

[TDS](#) [SDS](#)



BLUE HAMMERTONE
T064-BL95

[TDS](#) [SDS](#)



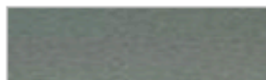
**GREEN
HAMMERTONE**
T064-GN81

[TDS](#) [SDS](#)



**SILVER METALLIC 30
GLOSS**
T353-GR06 *

[TDS](#) [SDS](#)



**SILVER METALLIC 60
GLOSS**
C356-GR1342 *

[TDS](#) [SDS](#)



**CHROME METALLIC
80 GLOSS**
T358-GR539 *

[TDS](#) [SDS](#)



**SILVER METALLIC 70
GLOSS**
T357-GR105 *

[TDS](#) [SDS](#)



**BRONZE METALLIC
TEXTURE**
T391-BG290 *

[TDS](#) [SDS](#)



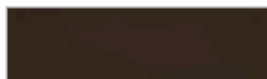
**SILVER METALLIC
TEXTURE**
T391-GR1031 *

[TDS](#) [SDS](#)



**BRASS METALLIC 30
GLOSS**
T353-YL02 *

[TDS](#) [SDS](#)



**STATUARY BRONZE
60 GLOSS**
T026-BR340

[TDS](#) [SDS](#)



**OIL RUBBED BRONZE
TEXTURE**
T291-BR251

[TDS](#) [SDS](#)



**OIL BRONZE 20
GLOSS**
T022-BR189

[TDS](#) [SDS](#)



STEEL GRAY TEXTURE
C292-GR494

[TDS](#) [SDS](#)



**STEEL GRAY 80
GLOSS**
T028-GR02

[TDS](#) [SDS](#)



BRONZE 50 GLOSS
T025-BR01

[TDS](#) [SDS](#)



**MOCK ROCK
TEXTURE**
T091-GR309

[TDS](#) [SDS](#)



PATINA TEXTURE
C291-GN20

[TDS](#) [SDS](#)



VERDIGRIS TEXTURE
T091-GN57

[TDS](#) [SDS](#)



RUST TEXTURE
T091-BR47

[TDS](#) [SDS](#)



Drylac®
Powder Coatings

Super Durable

Super Durable Powder Coatings | Volume 2



Vol. 2

TIGER Drylac® Series 38/138 is available in smooth glossy finish (*gloss level 80-95*) in the following RAL colors as standard-products and custom-products (*minimum order quantity applies*). Please contact **TIGER Drylac®** for more information:

RAL color Product ID	RAL color Product ID	RAL color Product ID	RAL color Product ID	RAL color Product ID	RAL color Product ID
RAL 1001 38/15001 138/15001	RAL 6001 38/50005 138/50005	RAL 6029 38/50029 138/50029	RAL 7030 38/70027 138/70027	RAL 8008 38/60008 *138/60008	
RAL 1002 38/20002 138/20002	RAL 6003 38/50003 138/50003	RAL 6032 38/50032 138/50032	RAL 7031 38/70031 138/70031	RAL 8011 38/60011 138/60011	
RAL 1013 38/10013 138/10013	RAL 6004 38/50004 138/50004	RAL 6033 38/50033 138/50033	RAL 7032 38/70001 138/70001	RAL 8012 38/60012 138/60012	
RAL 1014 38/15014 138/15014	RAL 6005 38/50002 138/50002	RAL 6034 38/50034 138/50034	RAL 7033 38/70033 138/70033	RAL 8014 38/60010 138/60010	
RAL 1015 38/15015 138/15015	RAL 6006 38/50006 138/50006	RAL 7000 38/70000 138/70000	RAL 7035 38/70035 138/70035	RAL 8016 38/60016 138/60016	
RAL 1016 38/20016 138/20016	RAL 6007 38/50007 138/50007	RAL 7002 38/70007 138/70007	RAL 7036 38/70036 138/70036	RAL 8017 38/60017 138/60017	
RAL 1019 38/15019 138/15019	RAL 6008 38/50008 138/50008	RAL 7004 38/70004 138/70004	RAL 7037 38/70037 138/70037	RAL 8019 38/60019 138/60019	
RAL 1020 38/20020	RAL 6009 38/50009 138/50009	RAL 7005 38/70005 138/70005	RAL 7038 38/70038 138/70038	RAL 8022 38/60022 138/60022	
RAL 1024 38/20024 138/20024	RAL 6011 38/50011 138/50011	RAL 7006 38/70006 138/70006	RAL 7039 38/70039 138/70039	RAL 8024 38/60024 138/60024	
RAL 3012 38/30012 138/30012	RAL 6012 38/50012 138/50012	RAL 7009 38/70009 138/70009	RAL 7040 38/70046 138/70046	RAL 8025 38/60025 138/60025	
RAL 5004 38/40004 138/40004	RAL 6013 38/50013 138/50013	RAL 7010 38/70014 138/70014	RAL 7042 38/70042 138/70042	RAL 8028 38/60028 138/60028	
RAL 5007 38/40007 138/40007	RAL 6016 38/50016 138/50016	RAL 7011 38/70011 138/70011	RAL 7043 38/70043 138/70043	RAL 9001 38/10001 138/10001	
RAL 5008 38/40008 138/40008	RAL 6017 38/50017 138/50017	RAL 7012 38/70012 138/70012	RAL 7044 38/70044 138/70044	RAL 9002 38/10002 138/10002	
RAL 5011 38/40011 138/40011	RAL 6018 38/50018 138/50018	RAL 7013 38/70013 138/70013	RAL 7045 38/70045 138/70045	RAL 9003 38/10003 138/10003	
RAL 5013 38/40013 138/40013	RAL 6019 38/50019 138/50019	RAL 7015 38/70015 138/70015	RAL 7046 38/70002 138/70817	RAL 9004 38/80004 138/80004	
RAL 5017 38/40017 138/40017	RAL 6020 38/50020 138/50020	RAL 7016 38/70016 138/70016	RAL 7047 38/70047 138/70047	RAL 9005 38/80010 138/80010	
RAL 5018 38/40020 138/40020	RAL 6021 38/50021 138/50021	RAL 7021 38/70021 138/70021	RAL 8001 38/60005 138/60005	RAL 9010 38/10004 138/10004	
RAL 5019 38/40019 138/40019	RAL 6022 38/50022 138/50022	RAL 7022 38/70022 138/70022	RAL 8002 38/60002 138/60002	RAL 9011 38/80001 138/80001	
RAL 5020 38/40018 138/40018	RAL 6026 38/50026 138/50026	RAL 7023 38/70023 138/70827	RAL 8003 38/60003 138/60003	RAL 9016 38/10010 138/10010	
RAL 5021 38/40021 138/40021	RAL 6027 38/50027 138/50027	RAL 7024 38/70024 138/70024	RAL 8004 38/60004 138/60004	RAL 9017 38/80017 138/80017	
RAL 6000 38/50000 138/50000	RAL 6028 38/50028 138/50028	RAL 7026 38/70026 138/70026	RAL 8007 38/60007 138/60007	RAL 9018 38/10018 138/10018	

* Aprx to RAL 8008

TIGER Drylac® Color Cards

Additional **TIGER Drylac®** Color Cards include: 3D Metallics, RAL Colors + Textured and Smooth, Metallics & Special Effects, Kiosk Color Card, Navy, CARC¹, Agriculture, Construction & Earth Moving Equipment (ACE)² and Series 29².

Disclaimer

Color swatches featured in this document have been matched to color standards at a **45-degree visual angle under a D65 Daylight** primary source. RAL numbers are matched closely to the RAL Standards. Gloss level on metallic and fine textured swatches cannot be accurately measured.

Color swatches are considered as an indicator only. In practice, discrepancy between the color swatch and the actual powder coating may be present due to: paper and ink limitations, the influence of light and heat during the color swatch production, gloss level, substrate, surface variation, binder and pigment systems, coating thickness or cure oven conditions used during application. For better accuracy of color and finish, it is recommended to obtain a powder coated sample panel from **TIGER Drylac®**.

Semi transparent colors require a durable primer chemistry. Please contact **TIGER Drylac®** if using the following products in a two-coat system consisting of a primer or e-coat base coat: **TIGER Drylac® 38/90080 Brilliant Sparkle Silver** and/or **TIGER Drylac® 38/99999 Bengal Silver**.

TIGER Drylac® Super Durable products with a **fine texture finish** are recommended for use with a base coat primer.

¹ Must be a qualified applicator to order.

² Digital color card only. Visit TIGERs website to download.

Super Durable powder coatings for exterior and interior applications

TIGER Drylac® features a full line of **Super Durable** high-performance powder coatings intended for architectural applications such as metal façades, steel construction, stadium seating, railings, residential window & door frames and more. **TIGER Drylac® Super Durable** products are also suitable for applications where extreme weather resistance is required such as agricultural & construction equipment, military (Army and Navy) equipment, communication towers, playground equipment, patio furniture and garden equipment.

Please note the following TIGER Drylac® series include Super Durable products:

Series 38	Super Durable polyester
Series 138	Super Durable TGIC-Free polyester
Series 61	Super Durable Anodized Effect polyester TGIC-Free
Series 68	3D Metallic, Super Durable TGIC-Free polyester

NEW - Series 138

TIGER Drylac® Series 138 are **TGIC-Free Super Durable** powder coatings with “Flex Cure” a uniquely designed flexible curing technology to accommodate a quicker crosslinking of the chemistry. **Series 138** powder coatings feature reliable performance characteristics favorable to **Series 38 Super Durable** formulations.

TIGER Shield system

This two-coat system consists of a corrosion protective primer as a base coat and an opaque weather resistant topcoat. It is used to achieve excellent corrosion resistance in harsh environments.

TIGER Drylac® Dryprotector, (69/70000), Zinc-Rich Primer (69/90500 - 69/90701 in Canada only) and Zinc-Free **OGF Primer (09/73841)** are primers recommended to achieve an optimum non-porous film. For additional information on the application of the **TIGER Shield** system, refer to the latest Product Data Sheets for these primers, which can be found on the TIGER Coatings website.

Bureau of Land Management (BLM) Standard Environmental Colors

The US Bureau of Land Management Standard Environmental Colors were developed by government to minimize visual contrast with background landscaping and ensure proper color selection for facilities. **TIGER Drylac® Super Durable** products in BLM colors are approved to US government standards due to their outstanding weather and UV resistance, engineered to withstand extended exposure to harsh environments.

3D Metallic Powder Coatings

Until now one-coat powder coatings could not match the visual performance provided by wet effect paints. However, **TIGER Coatings** is now opening spheres previously out of reach with **3D Metallics**. The coating features a breathtaking, three-dimensional effect with stunning depth, spatial clarity and unsurpassed brightness. These effects remain visible at a considerable distance and from different perspectives.

With **TIGER Drylac® 3D Metallics**, many areas of industrial surface finishing may now draw on the ‘green’ technology of powder coating and move away from solvent-based wet paints.

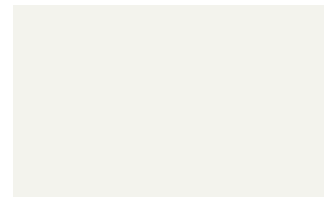
TIGER Drylac® 3D Metallics are a **Super Durable** formulation. See our **Series 68 Color Card** for details.

New Product – Weathered Steel Finishes

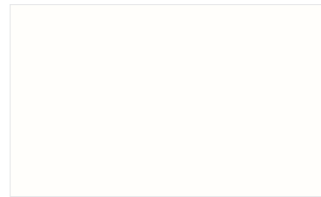
TIGER Drylac® introduces two new finishes to replicate the comforting look and tactile feel of naturally weathered steel. **Weathered Steel Ambra** pleasingly resembles orange rust on iron, while **Weathered Steel Viola** exhibits deep reds and burgundies that blossom only after oxidation has occurred over many years. These finishes are easy to maintain and will retain their original color without unsightly stains and degradation that occur with rusting iron.

Products marked with RED text: Limited stock is available, please consult the stock indicator on our Webshop or contact TIGER at 1 (800) 243-8148. Once stock is depleted, product will be moved to Custom Order and minimum quantities of 500 kg/1,100 lb will apply.

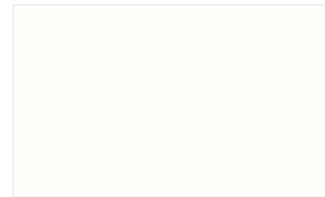
DIGITAL VERSION: The colors/effects shown here will deviate from the original color/effect due to screen technology.



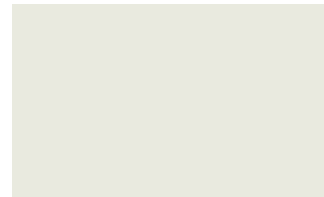
glossy | 138/10007
Bianco 302 *** | gloss level 80-95



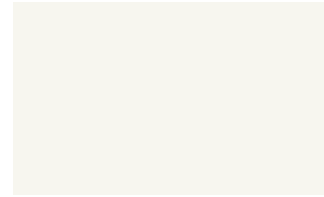
semi gloss | 138/10008
Railing White | gloss level 55 - 65 **NEW**



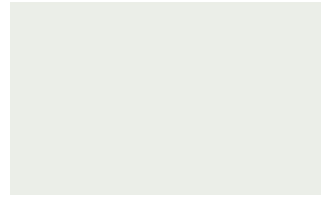
satin | 38/10130
Seashell White *** | gloss level 23-33



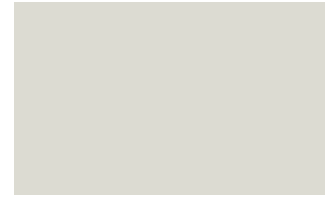
satin | 38/10070
Bone White *** | gloss level 16-25



glossy | 138/10090
Extrusion White *** | gloss level 80-95



semi matte | 38/11401
Pompano White *** | gloss level 40-50



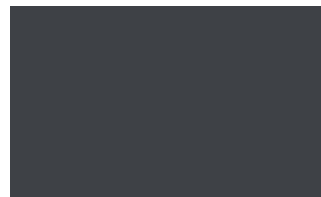
glossy | 38/70032
Grey Classic 303 | gloss level 80-95



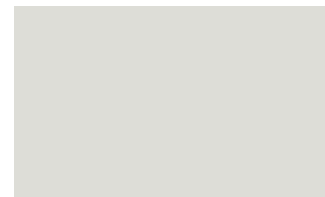
glossy | 138/70054
Grey Classic 308 | gloss level 80-95



glossy | 38/70056
Grey Classic 310 | gloss level 80-95



glossy | 138/70061
Grey Classic 314 | gloss level 80-95



satin | 38/70048
Sky Grey | gloss level 26-35



satin | 38/70025
Ash Grey | gloss level 26-35



satin | 38/70049
Grey | gloss level 26-35



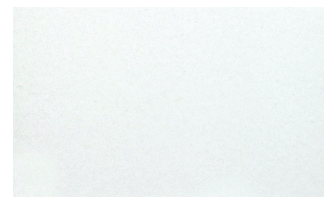
satin | 38/70019
Slate Grey | gloss level 20-30



satin | 38/70070
Taupe *** | gloss level 26-35



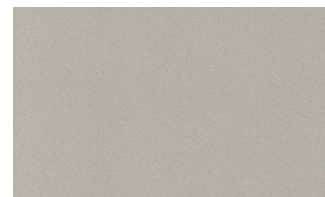
satin | 38/70780
Charcoal Grey | gloss level 26-35 **NEW**



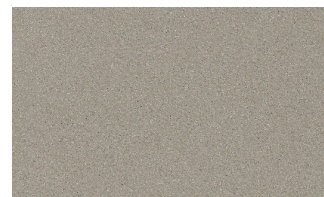
metallic | 38/90003
Argento 301



metallic | 38/90007
Argento 305



metallic | 38/90009
Argento 307



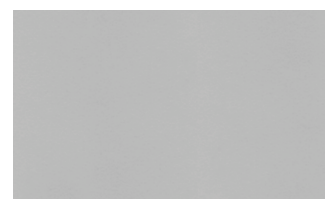
metallic | 38/90011
Argento 308



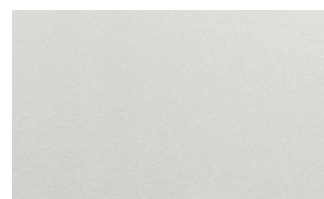
metallic | 38/90080
Brilliant Sparkle Silver ** | ***



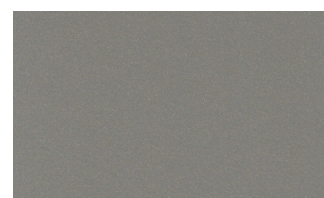
metallic | 38/99999
Bengal Silver ***



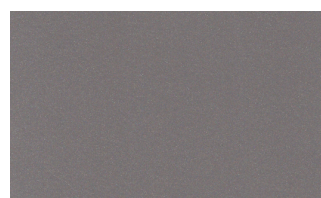
metallic | 138/91021
Anodized Silver



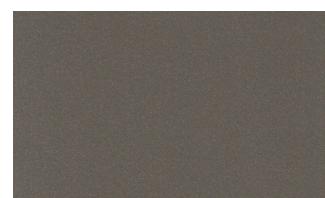
metallic | 38/90010
Marine Silver One Coat



metallic | 38/90015
Pearl Dark Grey



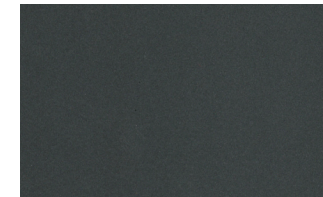
metallic | 38/90016
Argento 312



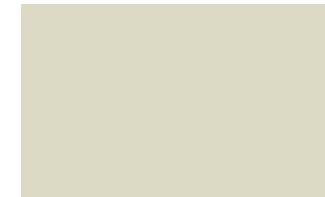
metallic | 38/90018
Argento 314



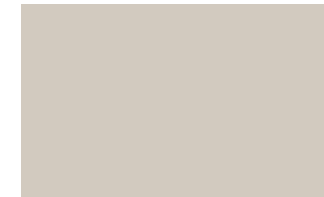
metallic | 38/97445
Starline Silver **NEW**



metallic | 38/88005
Sparrow Grey



satin | 38/15003
Almond *** | gloss level 26-35



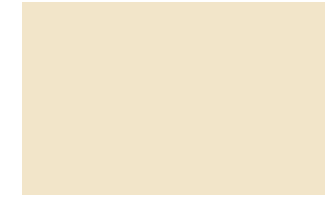
satin | 38/15012
Sandstone *** | gloss level 26-35



satin | 38/15002
Sierra Tan *** | gloss level 25-35



glossy | 138/15005
Creme 301 *** | gloss level 80-95



glossy | 138/15007
Creme 303 *** | gloss level 80-95



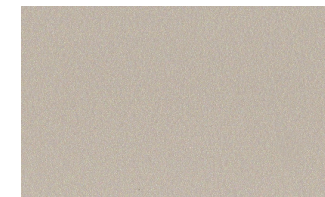
glossy | 138/15009
Creme 305 *** | gloss level 80-95



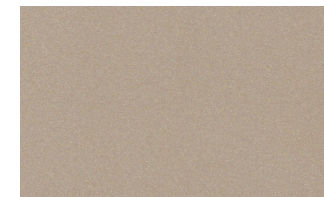
metallic | 38/15017
Champagne 301



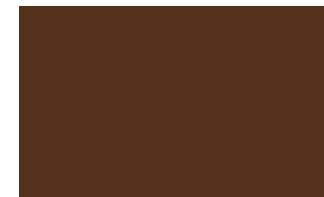
metallic | 38/15018
Champagne 302



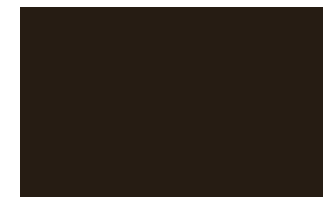
metallic | 38/15020
Champagne 303



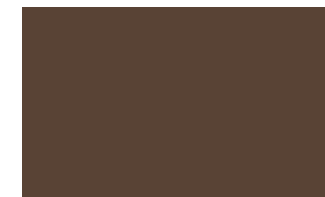
metallic | 38/15021
Champagne 304



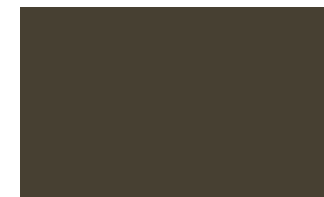
glossy | 138/60026
Marrone 306 | gloss level 80-95



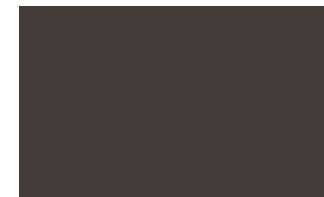
glossy | 138/60039
Marrone 308 | gloss level 80-95



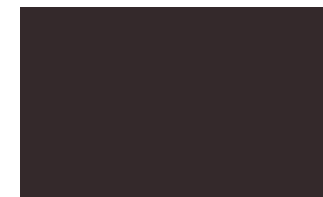
satin | 38/60018
Koko Brown | gloss level 26-35



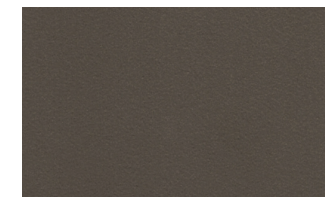
satin | 38/60014
Medium Bronze | gloss level 26-35



satin | 38/60080
Statuary Bronze | gloss level 26-35



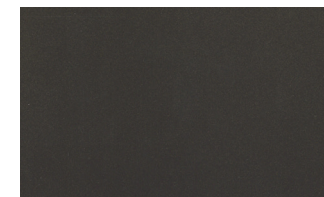
satin | 38/60090
Dark Anodized Bronze | gloss level 25-35



metallic | 38/60060
Medium Bronze



metallic | 38/96021
Neptune Bronze



metallic | 38/68008
Spartacus Bronze



fine texture | 38/68192
Gold Brown



fine texture | 38/68130
Greco



satin | 38/30041
Redwood | gloss level 26-35



matte | 38/30028
Brick Red | gloss level 16-25



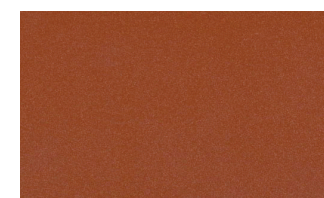
fine texture | 38/60499
Weathered Steel Ambra **NEW**



metallic | 38/20014
Deore 302 ***



metallic | 38/68015
Venetian Copper



metallic | 38/60064
Pearl Copper

** To enhance the depth of finish, TIGER Drylac® recommends the application of a clear top coat. | *** Due to semi transparency of the product, the opacity of the color and finish will depend upon the substrate type and the film thickness. A film below 2.8 mils will exhibit limited hiding.

Products marked with RED text: Limited stock is available, please consult the stock indicator on our Webshop or contact TIGER at 1 (800) 243-8148. Once stock is depleted, product will be moved to Custom Order and minimum quantities of 500 kg/1,100 lb will apply.



glossy | 138/20161
Caution Yellow | gloss level 80-95 **NEW**



glossy | 138/50039
Highland 305 | gloss level 80-95



glossy | 138/50040
Highland 306 | gloss level 80-95



glossy | 138/50041
Highland 307 | gloss level 80-95



satin | 38/50080
Ivy Green | gloss level 26-35



satin | 38/50037
Classic Green | gloss level 20-30



satin | 38/50110
Hartford Green | gloss level 26-35



matte | 38/60006
Aged Copper | gloss level 16-25



metallic | 38/50035
Seafoam Green



metallic | 38/50043
Highland 301



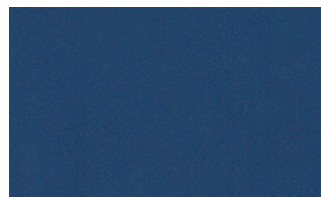
glossy | 138/40033
Azzurro 307 | gloss level 80-95



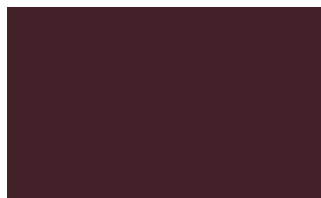
satin | 38/40051
Military Blue | gloss level 20 - 30



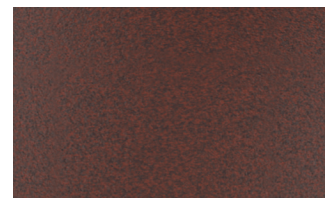
matte | 38/40025
Interstate Blue | gloss level 16-25



metallic | 38/40127
Pearl Night Blue



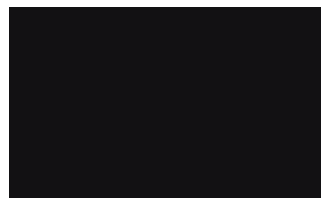
matte | 38/30033
Boysenberry | gloss level 16-25



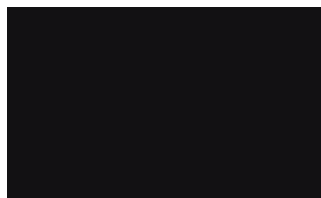
fine texture | 38/34005
Weathered Steel Viola **NEW**



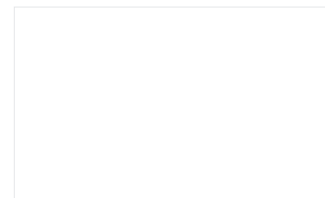
glossy | 138/80002
Carbon 301 | gloss level 80-95



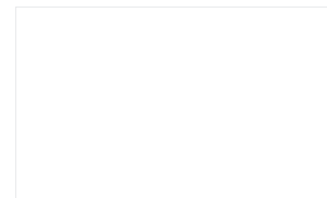
semi gloss | 138/81009
Railing Black | gloss level 55-65



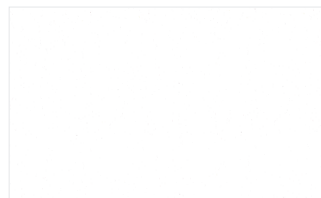
satin | 38/80020
Jet Black | gloss level 26-35



clear | 38/00088
Clear Matte SD



clear | 38/00001
Clear High Gloss SD



fine texture
all colors can be custom made in this finish

BLM



BLM | 38/60500
Carob Brown | gloss level 55-65



BLM | 138/60400
Sudan Brown | gloss level 55-65



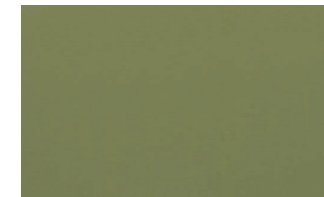
BLM | 38/16500
Carlsbad Canyon Brown | gloss level 55-65



BLM | 38/50500
Covert Green | gloss level 55-65



BLM | 38/52600
Shale Green | gloss level 55-65



BLM | 38/51400
Juniper Green | gloss level 55-65



BLM | 38/50400
Beetle | gloss level 55-65



BLM | 38/53000
Yuma Green | gloss level 55-65



BLM | 38/71700
Shadow Gray | gloss level 55-65



ANODIZED



anodized effect | 61/00015
Silver (clear)



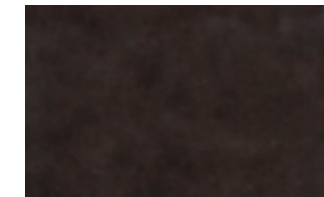
anodized effect | 61/78003
Champagne



anodized effect | 61/78002
Light Bronze



anodized effect | 61/68002
Medium Bronze



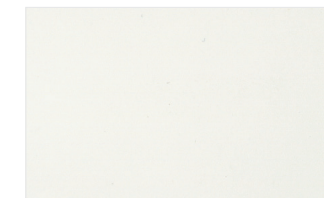
anodized effect | 61/68001
Dark Bronze



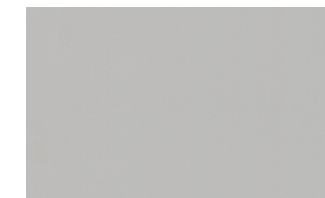
anodized effect | 61/80079
Black



PRIMERS



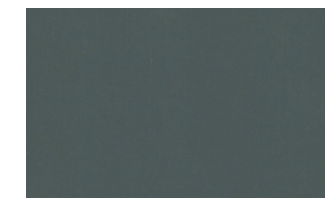
primer | 69/11001
Dryprotector White | gloss level 2-6 **NEW**



primer | 09/73841
OGF | gloss level 65-75



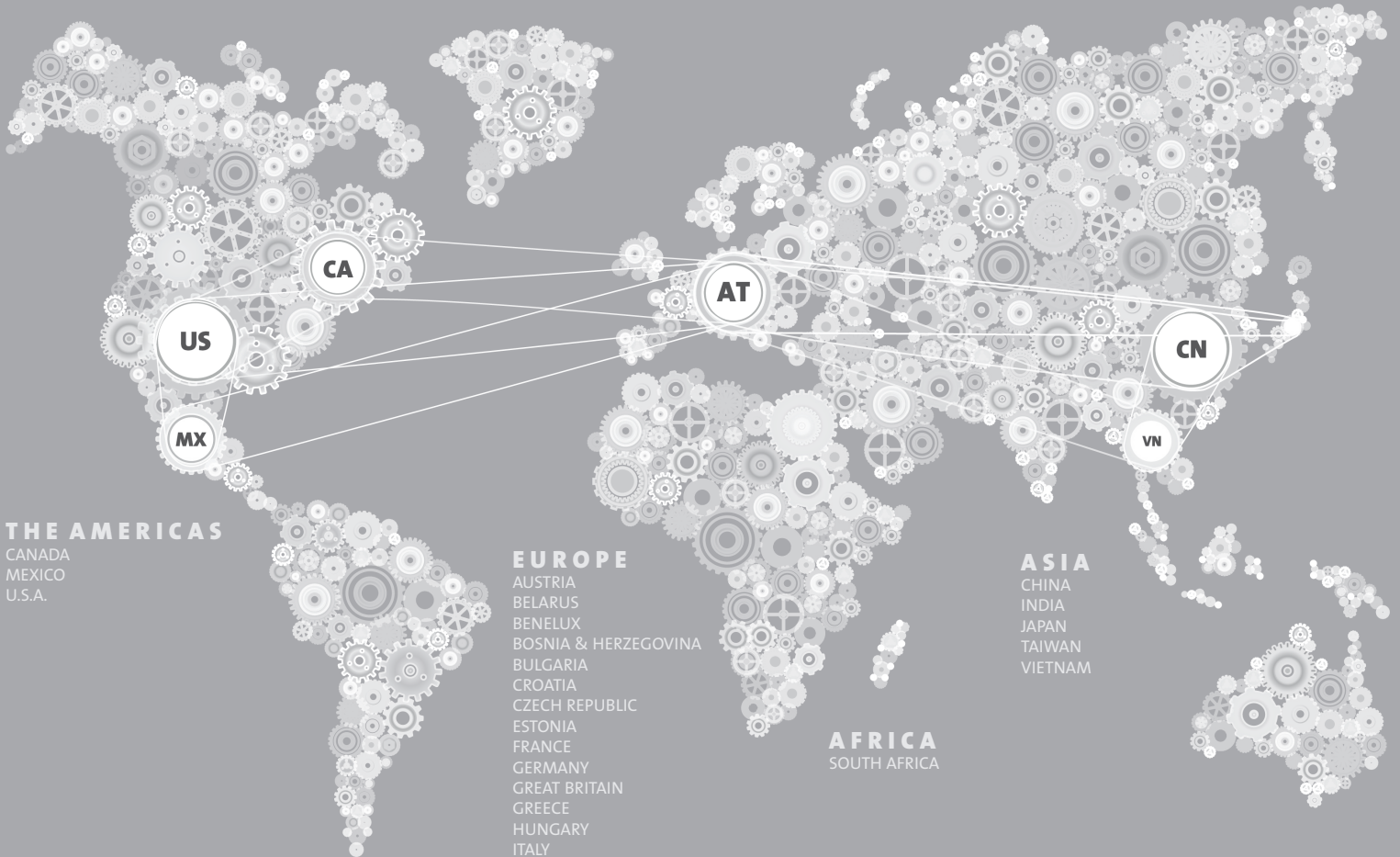
primer | 69/70000
Dryprotector | gloss level 1-5



primer | 69/90500 (USA/Mexico)
69/90701 (Canada)
Zinc-Rich Primer | gloss level 60-90

DIGITAL VERSION: The colors/effects shown here will deviate from the original color/effect due to screen technology.

TIGER WORLDWIDE NETWORK



THE AMERICAS

CANADA
MEXICO
U.S.A.

EUROPE

AUSTRIA
BELARUS
BENELUX
BOSNIA & HERZEGOVINA
BULGARIA
CROATIA
CZECH REPUBLIC
ESTONIA
FRANCE
GERMANY
GREAT BRITAIN
GREECE
HUNGARY
ITALY
LATVIA
LITHUANIA
MACEDONIA
POLAND
ROMANIA
SERBIA & MONTENEGRO
SLOVAKIA
SLOVENIA
SWITZERLAND
SPAIN
TURKEY
UKRAINE

ASIA

CHINA
INDIA
JAPAN
TAIWAN
VIETNAM

AFRICA

SOUTH AFRICA

999000070087

contact details available at

tiger-coatings.com



US/Canada: 1 (800) 243-8148

Mexico: 01 (800) 368-4437



TIGER Drylac® Architectural Powder Coatings

A unique collection of powder coatings compliant with AAMA specifications for North American manufacturers and designers.

Features

High performance architectural powder coating featuring:

- Superior gloss and color retention
- Outstanding resistance to fading
- Outstanding resistance to chalking
- Good chemical resistance
- Good edge coverage
- Good storage stability

Typical Applications

All Architectural and Construction Applications including:

- Metal Facades
- Marine Equipment
- Curtain Walls
- Window & Door Frames
- Railings
- Light Poles

TIGER Drylac® Series 75

Hyper Durable Powder Coatings for Architectural Aluminum Applications

TIGER Drylac® Series 75 is a Hyper Durable powder coating offering superior weatherability for architectural aluminum applications meeting the performance requirements described within AAMA 2605-20¹. AAMA 2605 is the highest performance standard for superior performance organic coatings applied to architectural products. Series 75 fluoropolymer powder coatings offer an environmentally friendly alternative to liquid coatings, achieving greater than 2.5 mil of dry film in a single application. The resulting finish is a corrosion resistant, mechanically robust, protective coating providing superior resistance to chalking and color fade².

Our products within **Series 75** are only available to **TIGER Drylac®** approved applicators for applications with an approved pretreatment on aluminum.

Series
75

TIGER Drylac® Series 38/138

Super Durable Powder Coatings for exterior and interior applications

TIGER Drylac® Series 38 polyester TGIC super durable, and **TIGER Drylac® Series 138** TGIC-free super durable powder coatings are compliant with the American Architectural Manufacturing Association's specification AAMA 2604³, offering excellent weather and UV resistance. Based on 5-year Florida exposure, **TIGER Drylac® Series 38/138** exhibits $\leq \Delta E$ 5.0 (Hunter) color change and > 30% gloss retention. TGIC-Free chemistry is also available for global distribution as **TIGER Drylac® Series 58**. **Series 58** is fully compliant with AAMA 2604 offering the same level of performance and protection.

For more information on **Series 38/138** super durable powder coatings please refer to our Super Durable color card.

For more information on **Series 58** TGIC-Free super durable powder coatings please refer to our product data sheet available on our website or consult with your **TIGER Drylac®** sales representative. **Series 58** is only available to approved architectural applicators.

Series
38
138
58

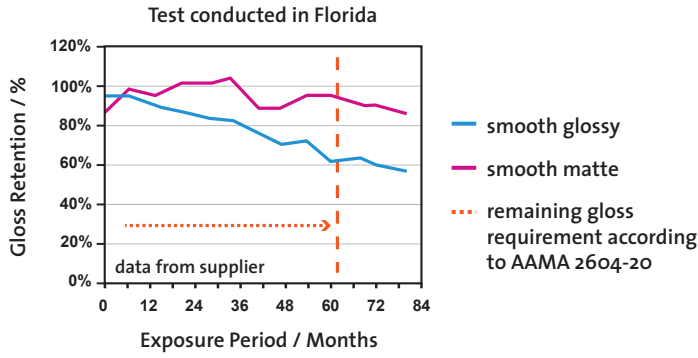
¹AAMA 2605 compliance is dependent upon the color and/or effect.

²Colors lighter than RAL 7000 in hue may prematurely chalk in extreme conditions due to the limitations of white pigment titanium dioxide.

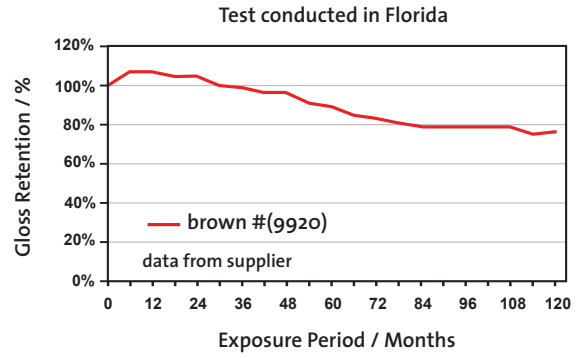
³AAMA 2604 compliance is dependent upon the color and/or effect.

Weather resistance of TIGER Drylac® Architectural Powder Coatings

Weather resistance testing according to AAMA 2604



Weather resistance testing according to AAMA 2605-20



TIGER Drylac® offers a variety of standard architectural products listed in the chart below.

COLOR NAME	TYPE	AAMA 2604		AAMA 2605	
		PRODUCT NUMBER	GLOSS	PRODUCT NUMBER	GLOSS
Sky Grey†	Solid Color	038/70048	25 - 35	075/70294	45 - 55
Dark Anodized Bronze	Solid Color	038/60090	25 - 35	075/60091	30 - 40
Medium Bronze	Solid Color	038/60014	20 - 30	075/60088	30 - 40
(Silver) Grey†	Solid Color	038/70049	25 - 35	075/70299	45 - 55
Statuary Bronze	Solid Color	038/60080	25 - 35	075/60090	30 - 40
Taupe	Solid Color	038/70070	25 - 35	075/70307	30 - 40
Sandstone†	Solid Color	038/15012	25 - 35	075/15061	45 - 55
Redwood	Solid Color	038/30041	25 - 35	075/30015	30 - 40
Interstate Blue	Solid Color	038/40025	16 - 25	075/40030	30 - 40
Slate Grey	Solid Color	038/70019	25 - 35	075/70302	30 - 40
Sierra Tan†	Solid Color	038/15002	25 - 35	075/15059	45 - 55
Bone White†	Solid Color	038/10070	25 - 35	075/10079	45 - 55
Almond†	Solid Color	038/15003	25 - 35	075/15060	45 - 55
Brick Red	Solid Color	038/30028	16 - 25	075/30010	30 - 40
Boysenberry	Solid Color	038/30033	16 - 25	075/30014	30 - 40
Ivy Green	Solid Color	038/50080	25 - 35	075/50020	30 - 40
Hartford Green	Solid Color	038/50110	25 - 35	075/50025	30 - 40
Aged Copper	Solid Color	038/60006	16 - 25	075/60087	45 - 55
Koko Brown	Solid Color	038/60018	25 - 35	075/60089	30 - 40
Ash Grey	Solid Color	038/70025	25 - 35	075/70303	30 - 40
Military Blue	Solid Color	038/40051	25 - 35	075/40031	30 - 40
Sea Shell White†	Solid Color	038/10130	25 - 35	075/10081	55 - 65
Jet Black	Solid Color	038/80020	26 - 35	075/80020	35 - 45
Charcoal Grey	Solid Color	038/70780	25 - 35	075/70312	30 - 40
Medium Bronze Metallic	Metallic	038/60060	Satin	075/68004	Semi Matte
Medium Bronze Anodized	Metallic	061/68002	Satin	075/68009	Semi Matte
Argento 314 Metallic	Metallic	138/90018	Glossy	075/78009	Semi Matte
Champagne 303 Metallic	Metallic	038/15020	Stain	075/15046	Semi Matte
Pearl Dark Grey	Metallic	038/90015	Satin	075/78014	Semi Matte
Anodized Silver	Metallic	138/91021	Semi Gloss	075/90127	Semi Matte

Custom Colors

TIGER Drylac® offers custom color matching* with as little as 88lb/40kg for solid and 396lb/180kg for metallic**.

† Series 75 colors marked with this symbol and those lighter than RAL 7000 in hue may prematurely chalk in extreme conditions due to the limitations of white pigment titanium dioxide.

* Due to the extreme durability requirements, organic pigments as a class cannot be used. This limits the colors to earth tone colors and colors of similar chromaticity in other parts of the spectrum, such as red, blue and green. Evaluations by our laboratory on a case-by-case basis are necessary.

** Metallic colors and effect may vary due to the product chemistry therefore a sample panel should be requested for official color approval. Custom matching is available. Please contact your TIGER Sales Representative for additional details.

